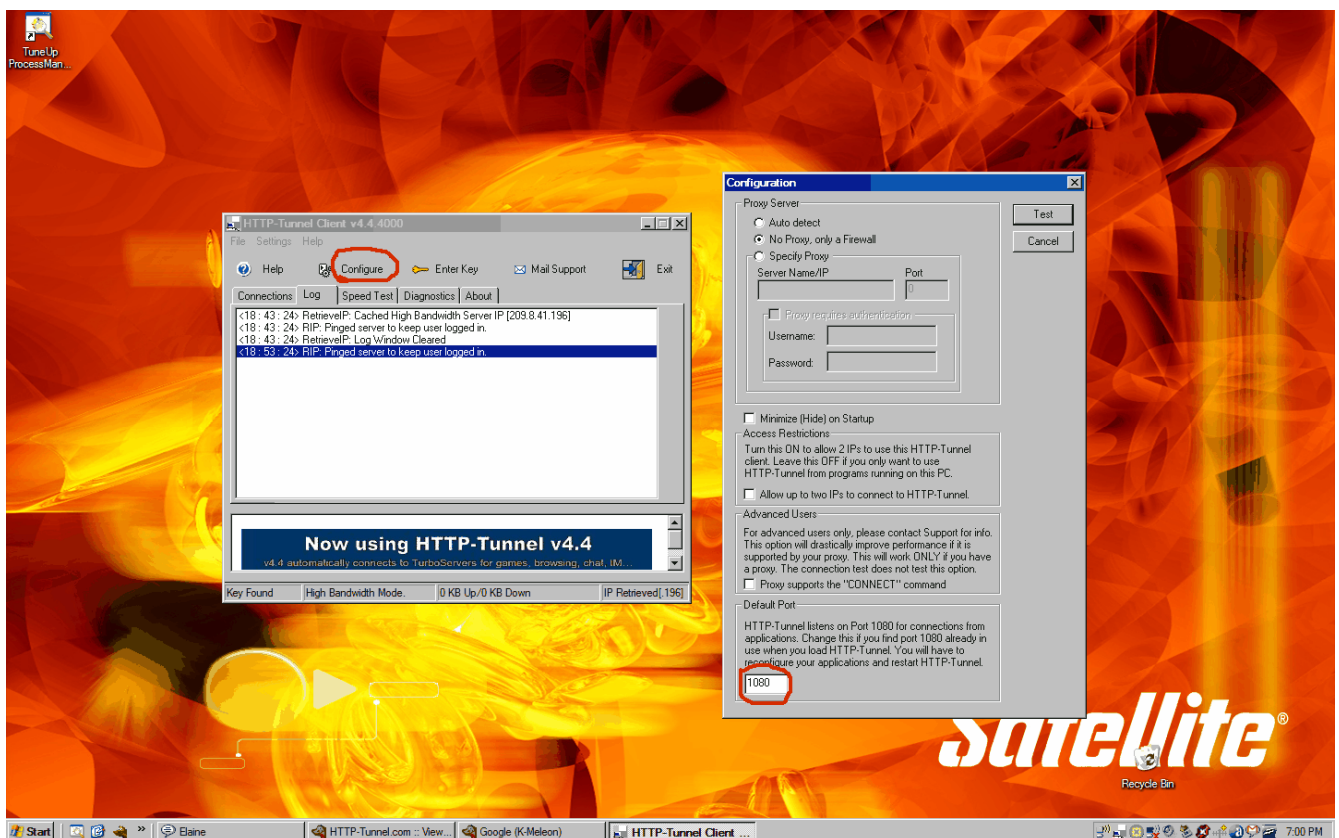


This is the guide to configure BitComet to use with HTTP Tunnel.  
It has been tested with BitComet v0.79. To keep using these settings please disable any update features in BitComet  
Please note that its only a configuration guide,we do not provide any support related to this specific client.

Once you have Http-Tunnel installed, run the application, The main window will appear, choose the configure option. There you will be presented with three ( 3 ) options.

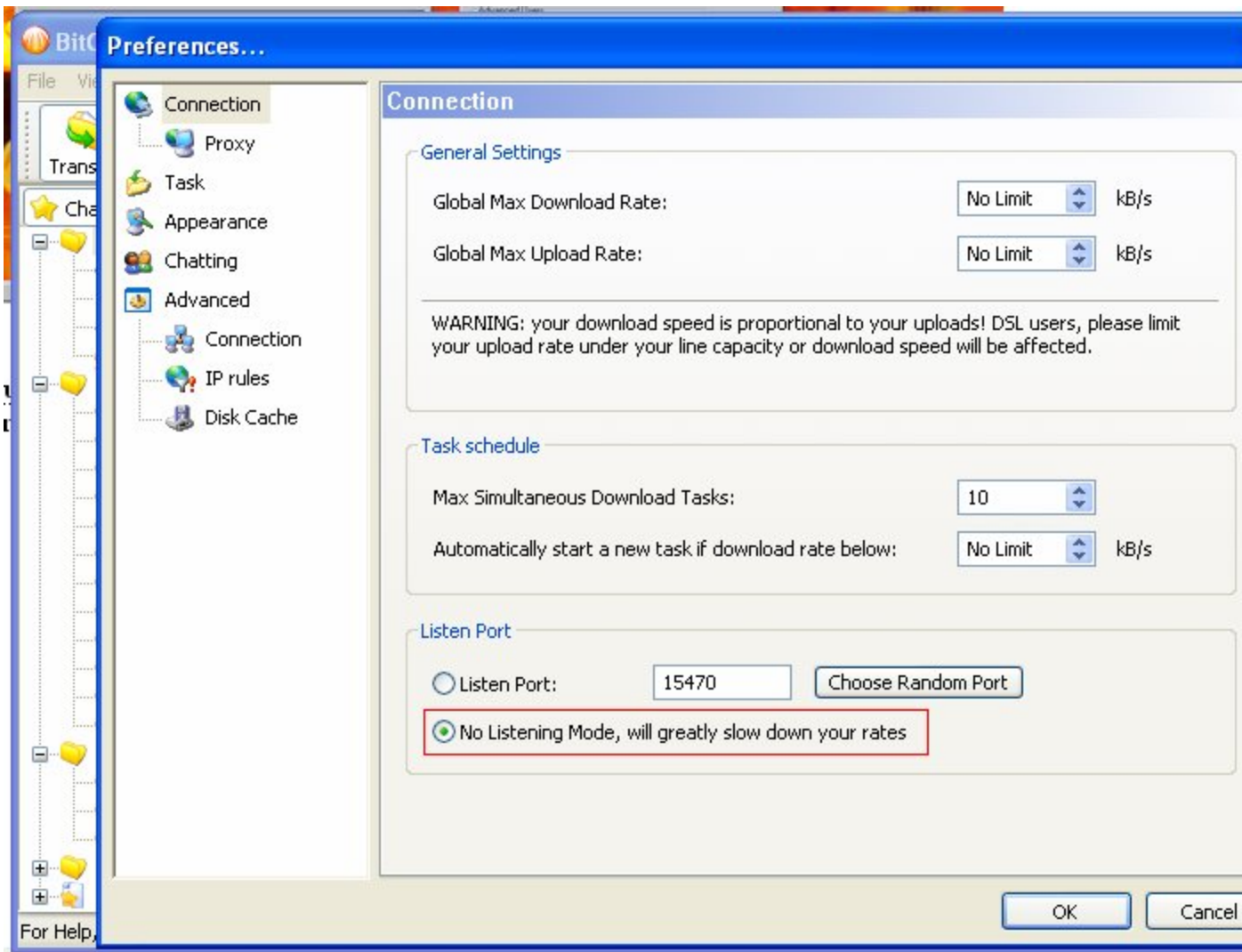
1. You can Select Auto detect if you want Http-Tunnel to detect your settings.
2. No Proxy, only a firewall if this is appropriate.
3. Specify Proxy, Here you will enter the IP address and Port number of the proxy that you use.

Complete 1 of the 3 options, then click test, the client will bind to port 1080 and localhost by default and connect to the tunnel servers if your settings are correct.



In Options menu -> Preferences

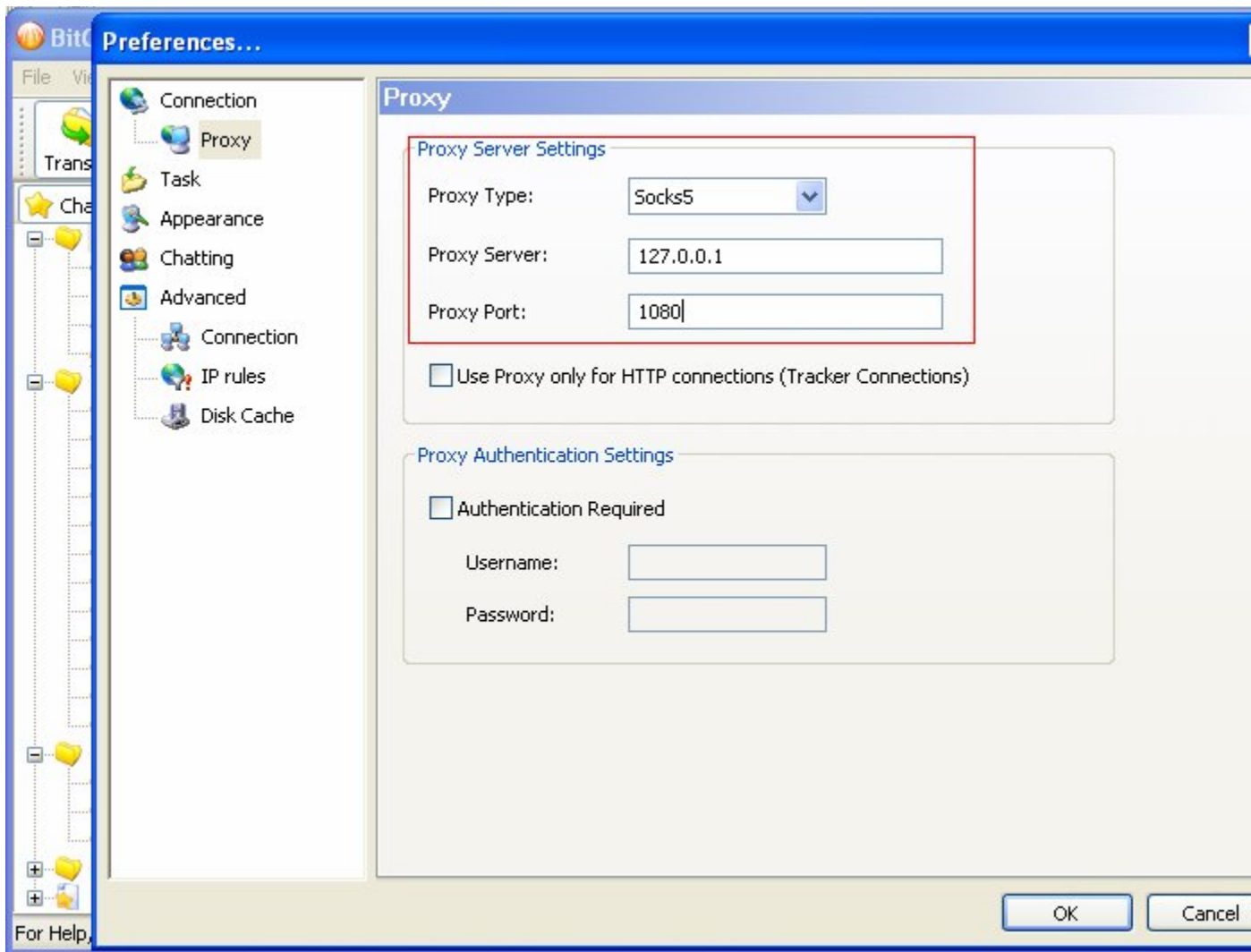
1. In Connection : Check on “No Listening Mode”



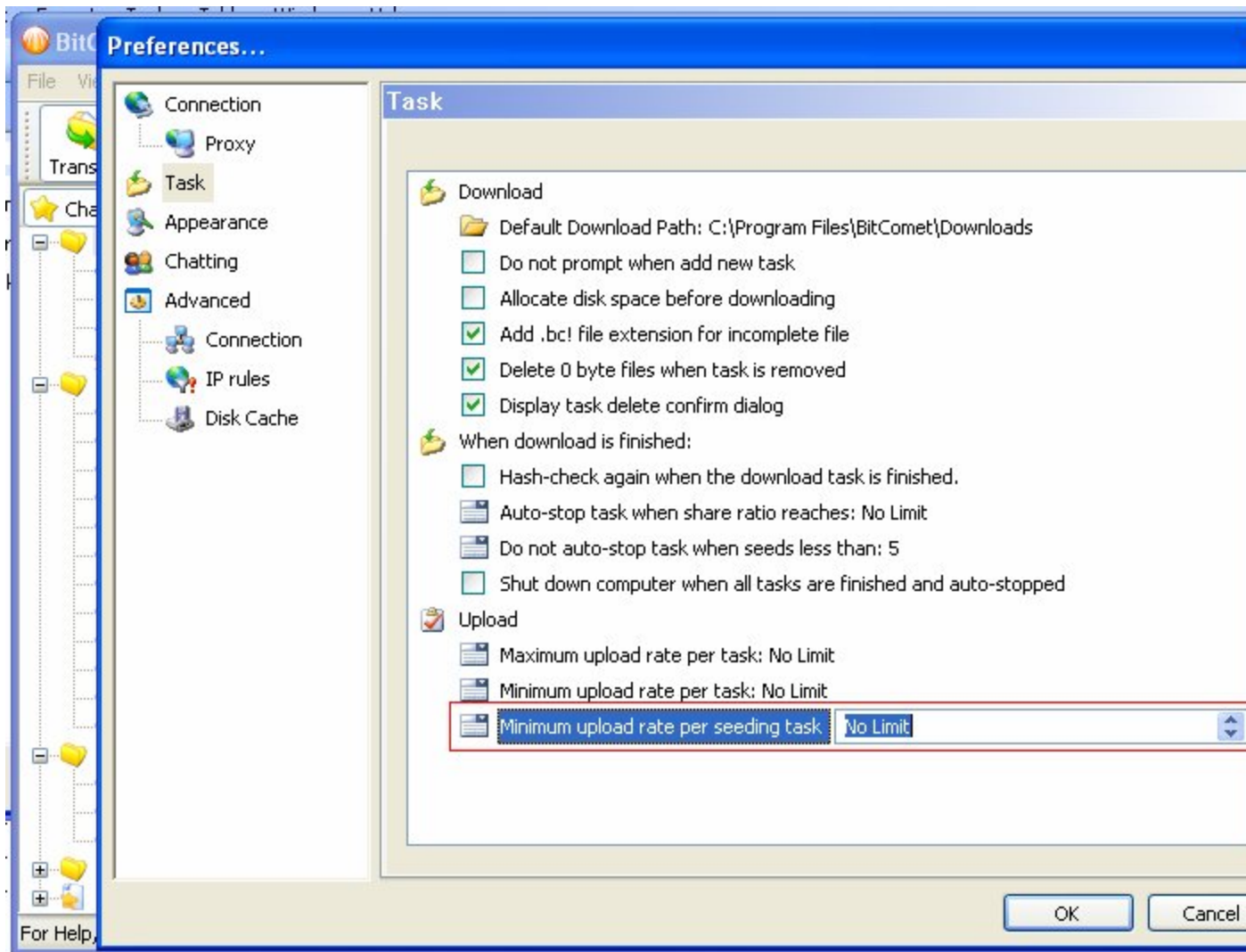
**2. In Proxy under Proxy Server Settings**

**Proxy Server : 127.0.0.1 Proxy Port : 1080**

**Proxy Type : Socks5**



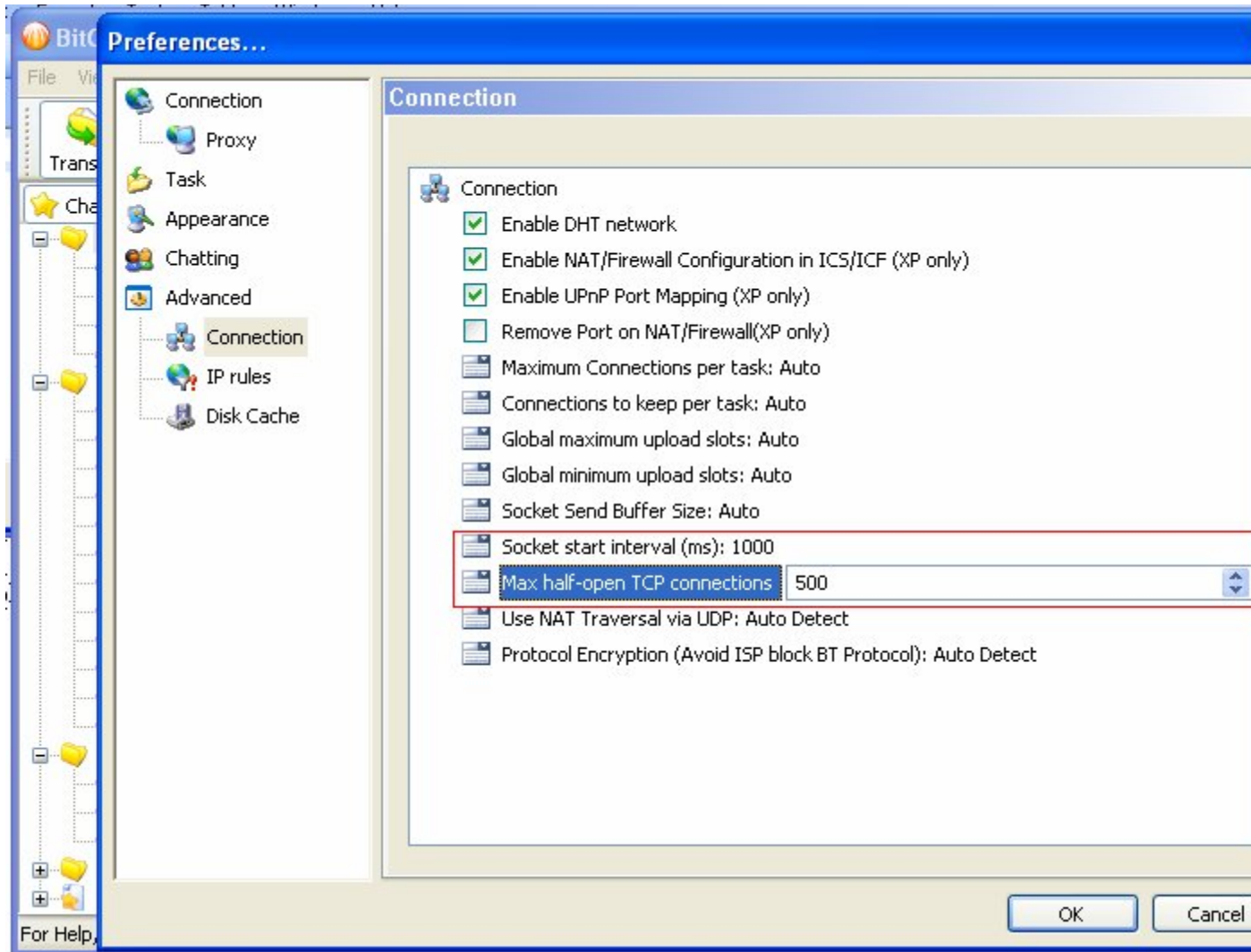
3. In Task, Set the “Minimum upload rate per seeding task” to “No Limit”.



**4. In Advanced -> Connection**

**For Socket start interval(ms) put 1000 for stable connections and 300 for best speeds but low stability.**

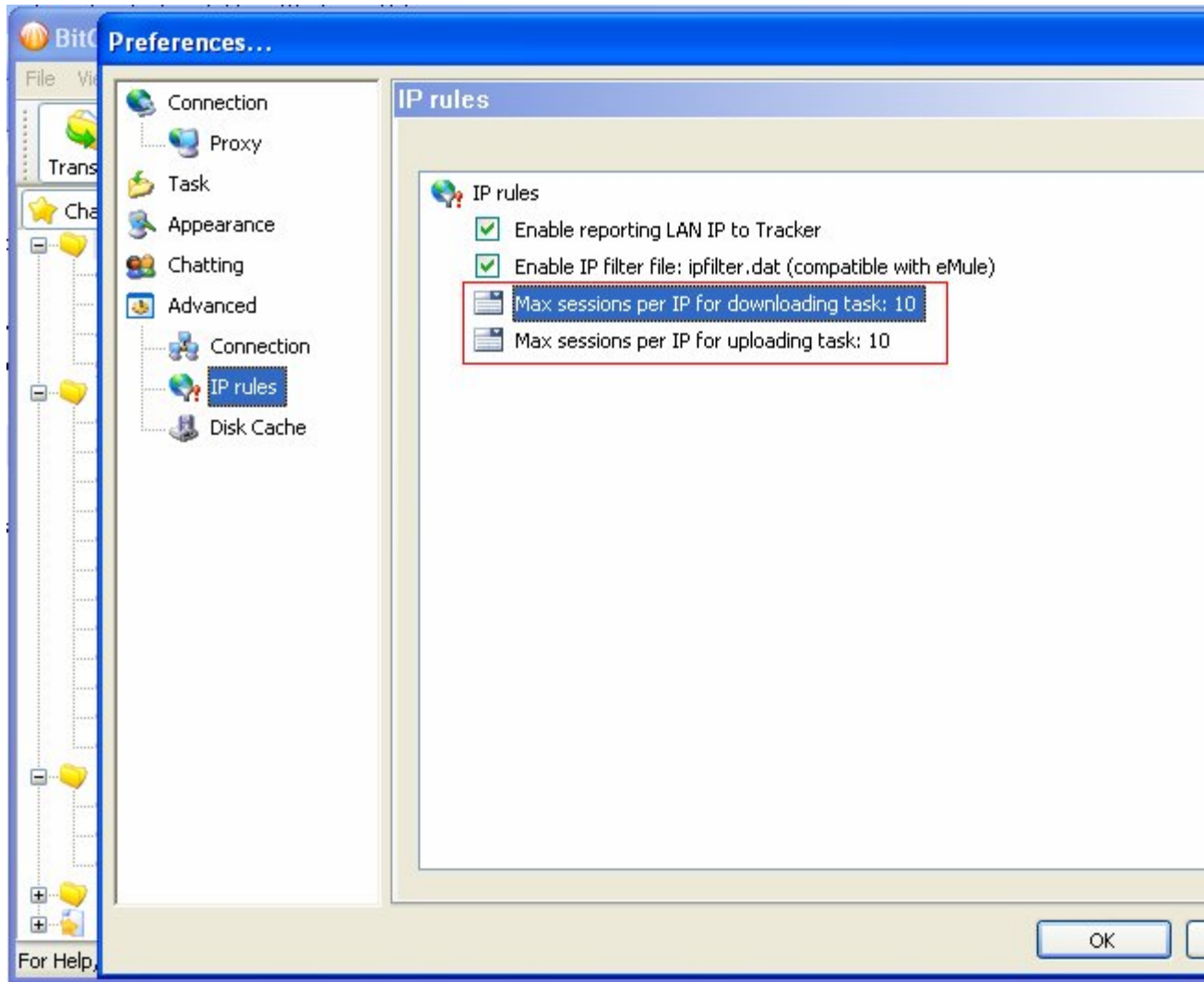
**In Max half-open TCP connections put the value you had set using lvlord patch,in my case here I had set the value of 500**



**5. In Advanced -> IP rules**

**For Max sessions per IP for downloading task put a value greater than 5,in my case I have put 10**

**For Max sessions per IP for uploading task put a value greater than 5,in my case I have put 10**



**You should see it connecting via HTTP Tunnel**

