

This is the guide to configure BitSpirit to use with HTTP Tunnel.

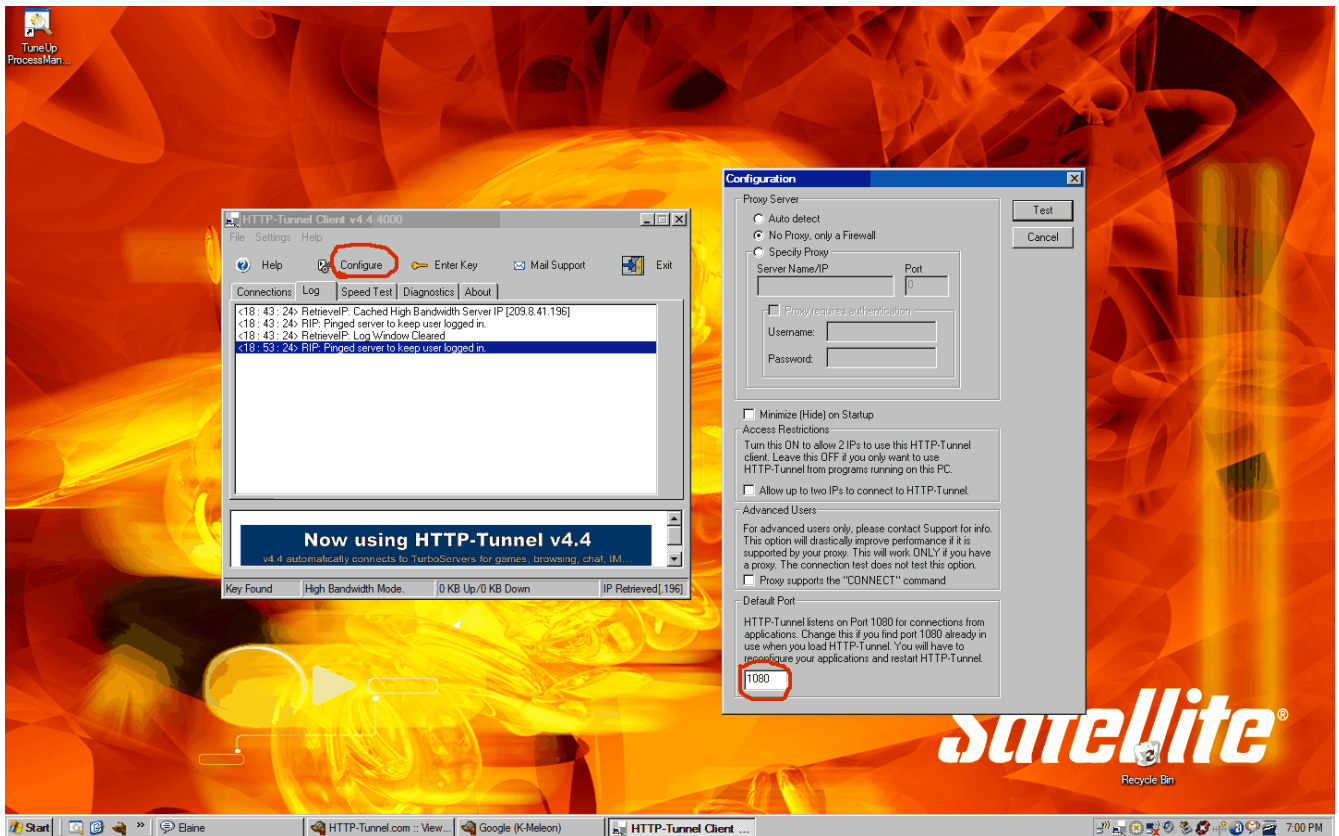
It has been tested with BitSpirit v3.

Please note that its only a configuration guide,we do not provide any support related to this specific client.

Once you have Http-Tunnel installed, run the application, The main window will appear, choose the configure option. There you will be presented with three (3) options.

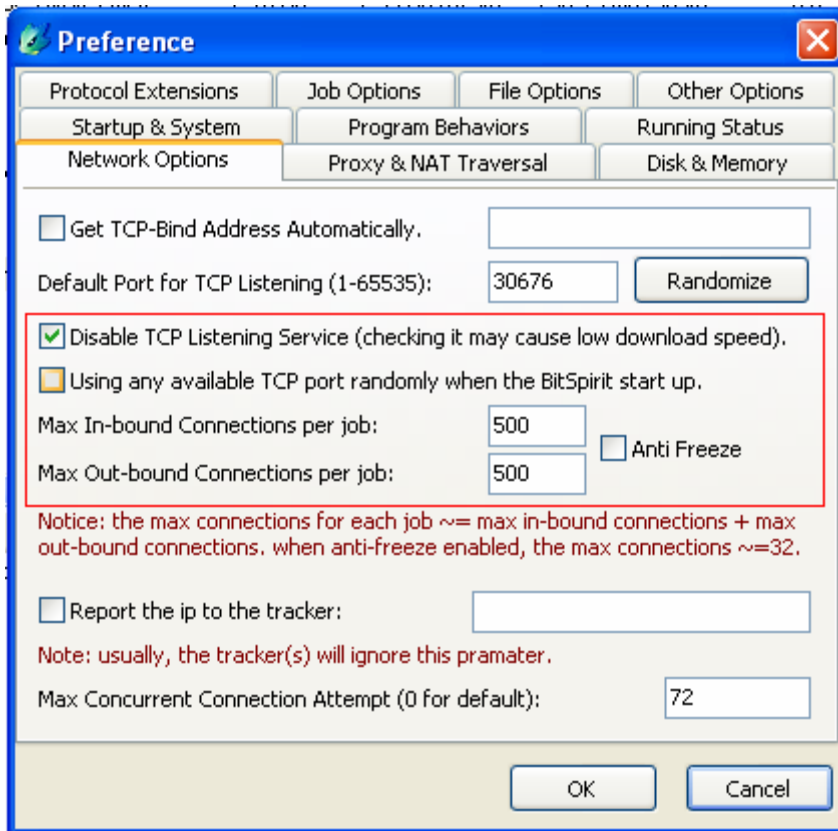
1. You can Select Auto detect if you want Http-Tunnel to detect your settings.
2. No Proxy, only a firewall if this is appropriate.
3. Specify Proxy, Here you will enter the IP address and Port number of the proxy that you use.

Complete 1 of the 3 options, then click test, the client will bind to port 1080 and localhost by default and connect to the tunnel servers if your settings are correct.



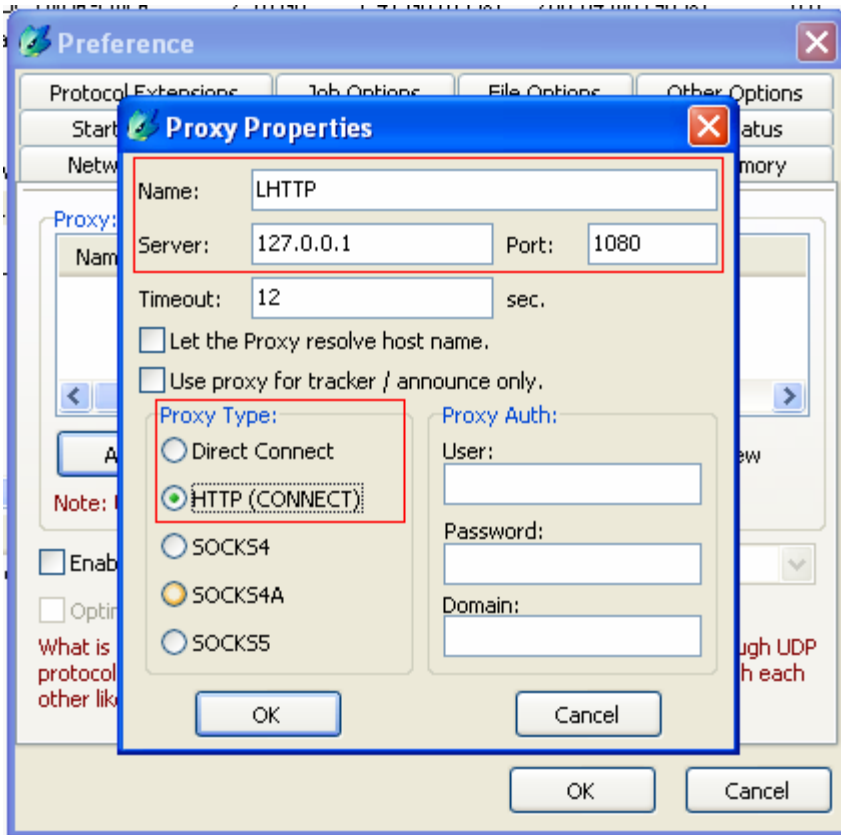
In Options menu -> Preferences

1. In Network Options tab click on "Disable TCP Listening Service"
2. Put a high value in Max In/Out-Bound Connections per job. In my case I have put 500.



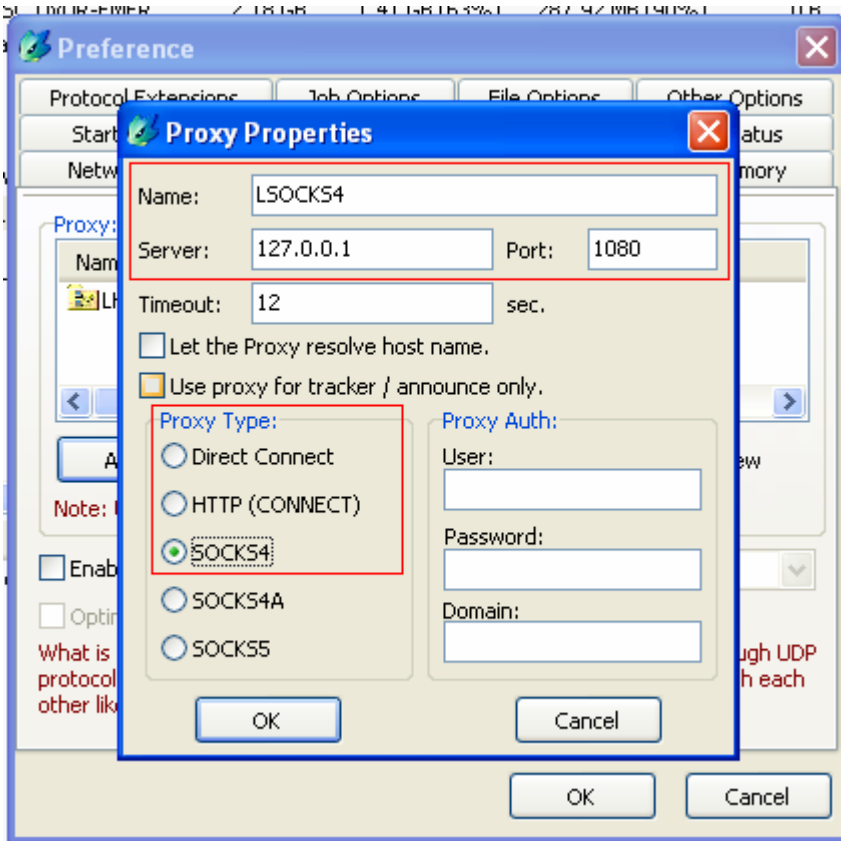
3. In Proxy & NAT Traversal click on Add

a) Name : LHTTP Server : 127.0.0.1 Port : 1080 Proxy Type : HTTP(Connect)



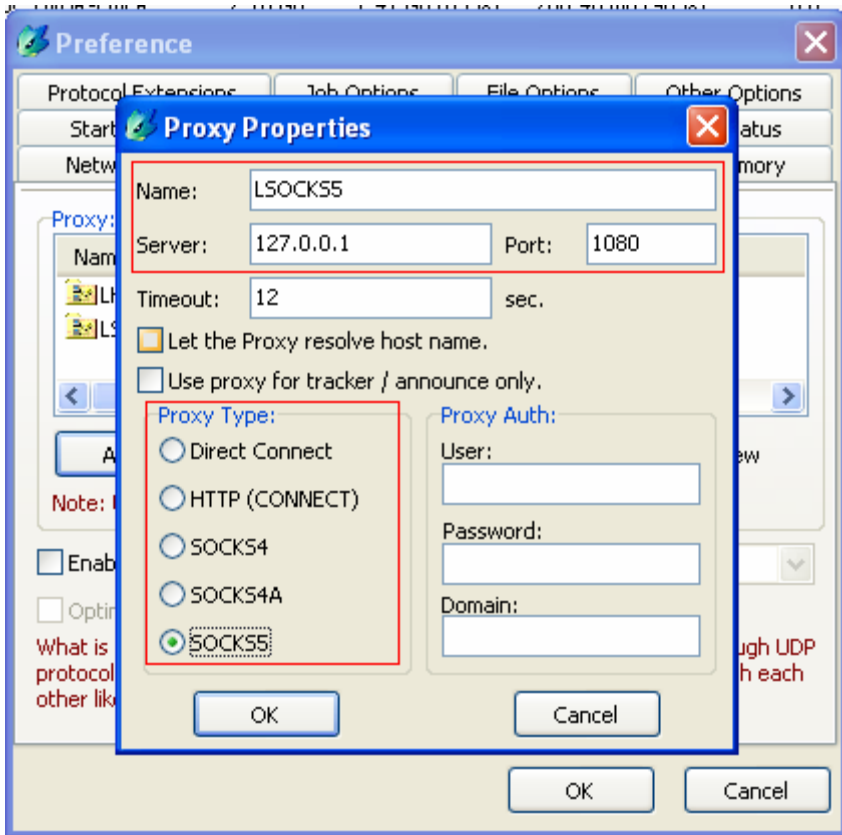
Click on OK and then again click on Add in the Proxy & NAT Traversal tab

b) Name : LSOCKS4 Server : 127.0.0.1 Port : 1080 Proxy Type : SOCKS4



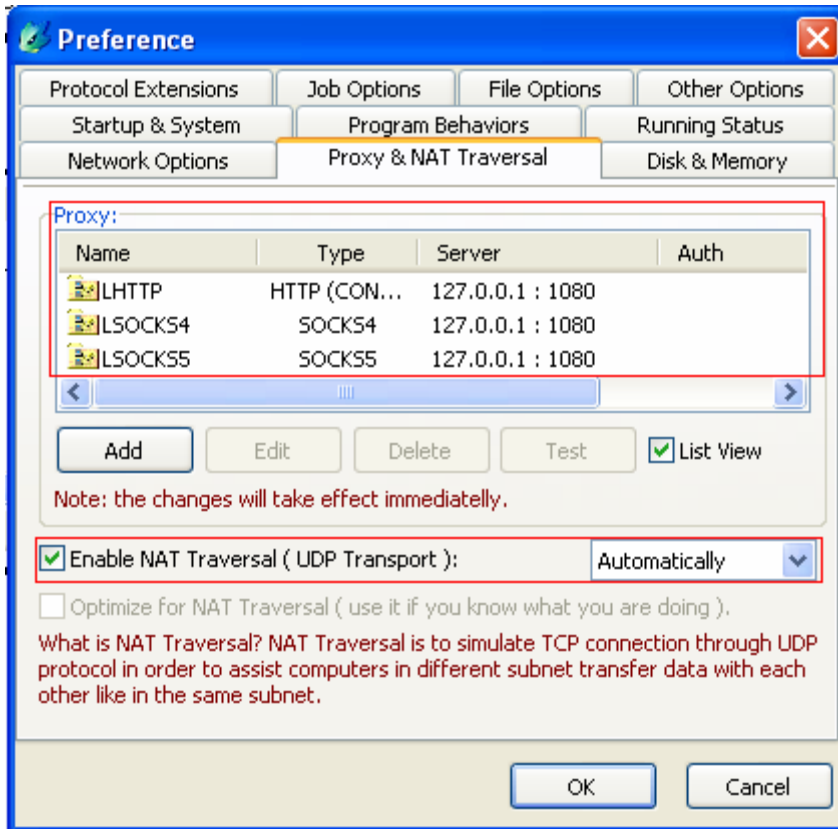
Click on OK and then again click on Add in the Proxy & NAT Traversal tab

c) Name : LSOCKS5 Server : 127.0.0.1 Port : 1080 Proxy Type : SOCKS5



4. Your final window should like as follow

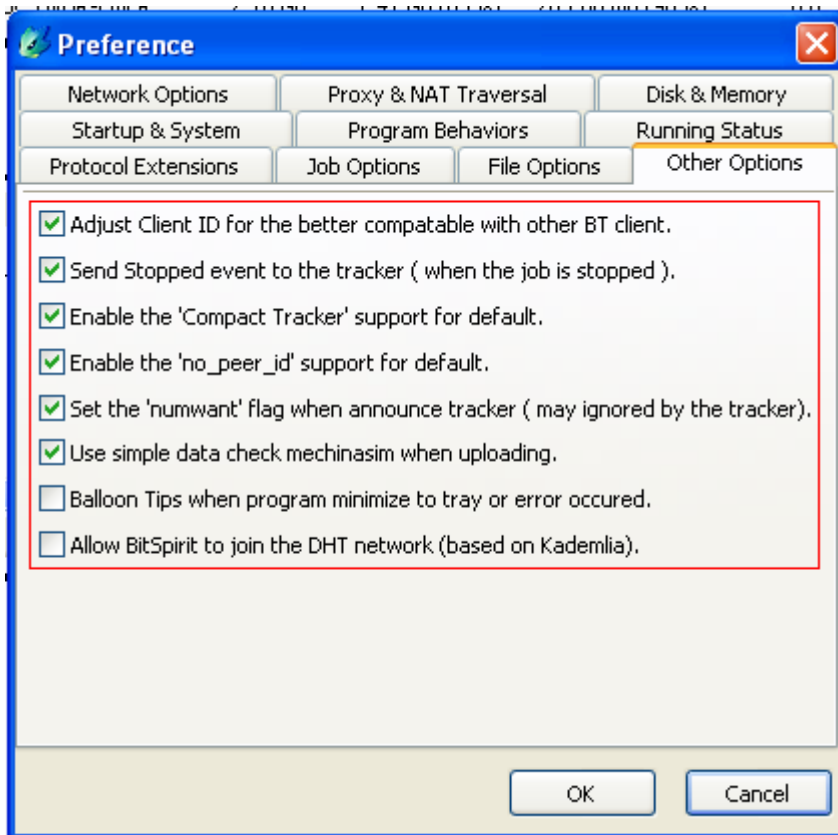
Be sure that the option Enable NAT Traversal(UDP Transport) if clicked has Automatically in its Option box



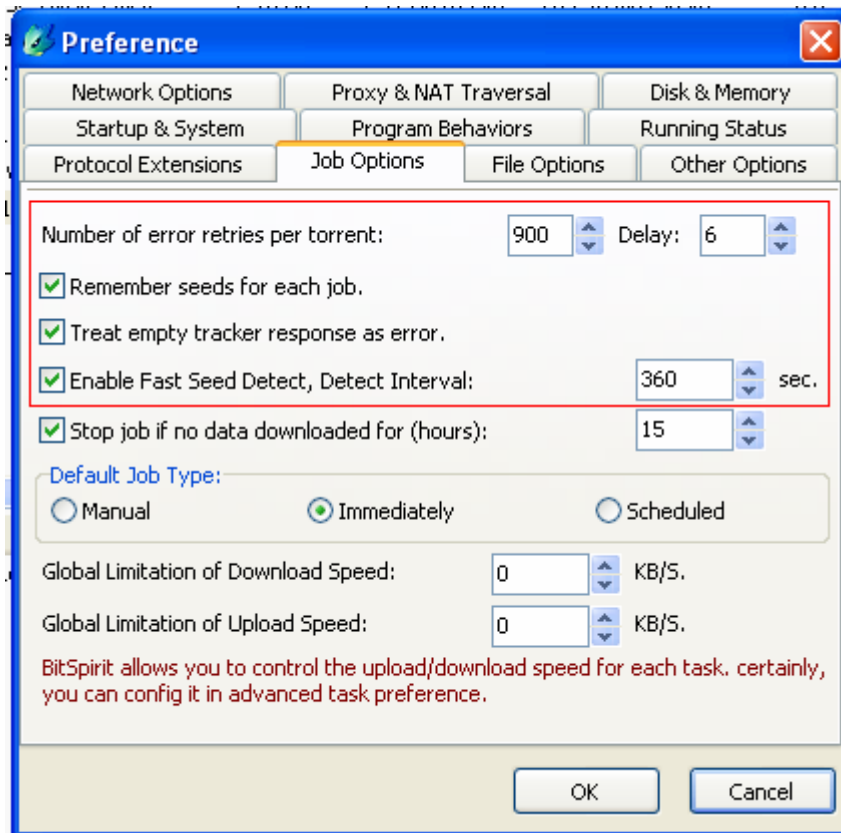
So now you have 3 Possible Configurations enabled,you can choose any of them depending on which one gives you the best speed as it depends on your computer and network configuration.

Do a little bit of experimentation and see which of the configurations in Step 3 above i.e. a)LHTTP b)LSOCKS4 or c)LSOCKS5 is best suited for you

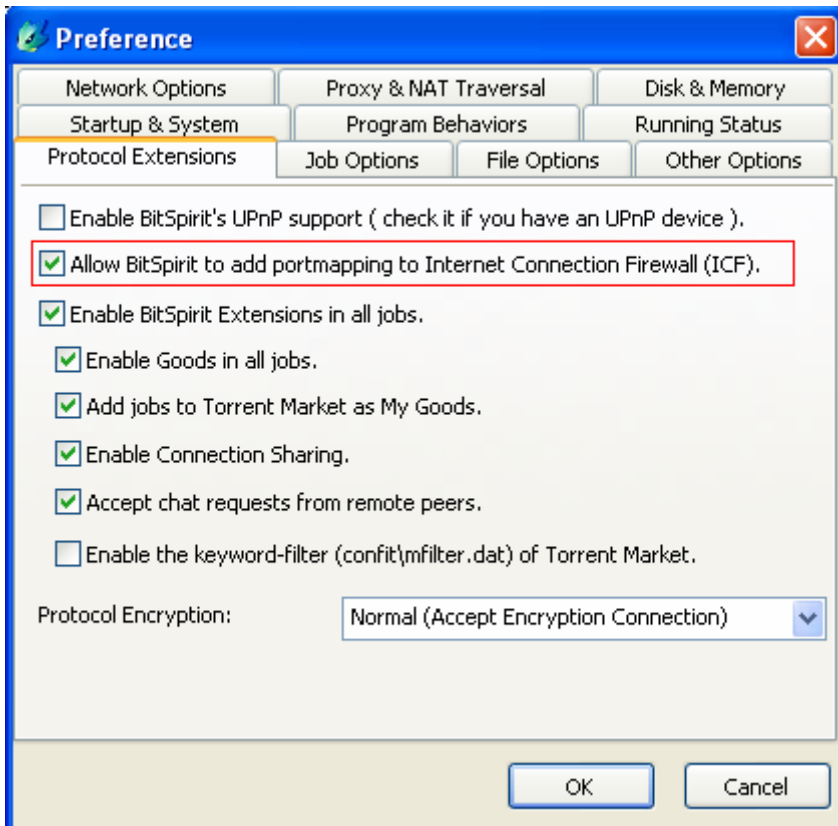
5. In Other Options tab make sure your settings are as below :



6. **In Job Options Tav make sure your settings are as below.You can fill any value you want in other fields**



7. In Protocol Extensions Tab make sure that Allow BitSpirit to add portmapping to Internet Connection Firewall (ICF) is enabled



You should see it connecting via HTTP Tunnel

