



HTTP-Tunnel.com

HTTP-Tunnel Forums

- [FAQ](#)
- [Search](#)
- [Memberlist](#)
- [Usergroups](#)
- [Register](#)

- [Profile](#)
- [Log in to check your private messages](#)
- [Log in](#)

ICQ (via SocksCap)



[HTTP-Tunnel.com Forum Index -> Documentation](#)

[View previous topic](#) :: [View next topic](#)

Author	Message
<p>bluethought Site Admin</p> <p>Joined: 25 Jun 2005 Posts: 2113</p>	<p> Posted: Thu Jul 28, 2005 6:54 am Post subject: ICQ (via SocksCap) quote</p> <hr/> <p>Note: - This holds for ICQ 5 [ICQLite]</p> <p>Video</p> <p>http://www.http-tunnel.com/bt/Videos/ICQ%20via%20SocksCap.avi</p> <p>If the video doesn't play, read the "Readme first" post in this forum.</p> <p>Guide</p> <ol style="list-style-type: none"> 1. Download and install SocksCap from http://www.socks.permeo.com/ 2. Run SocksCap, and configure it as described below. 3. Open File Menu, and click on Settings

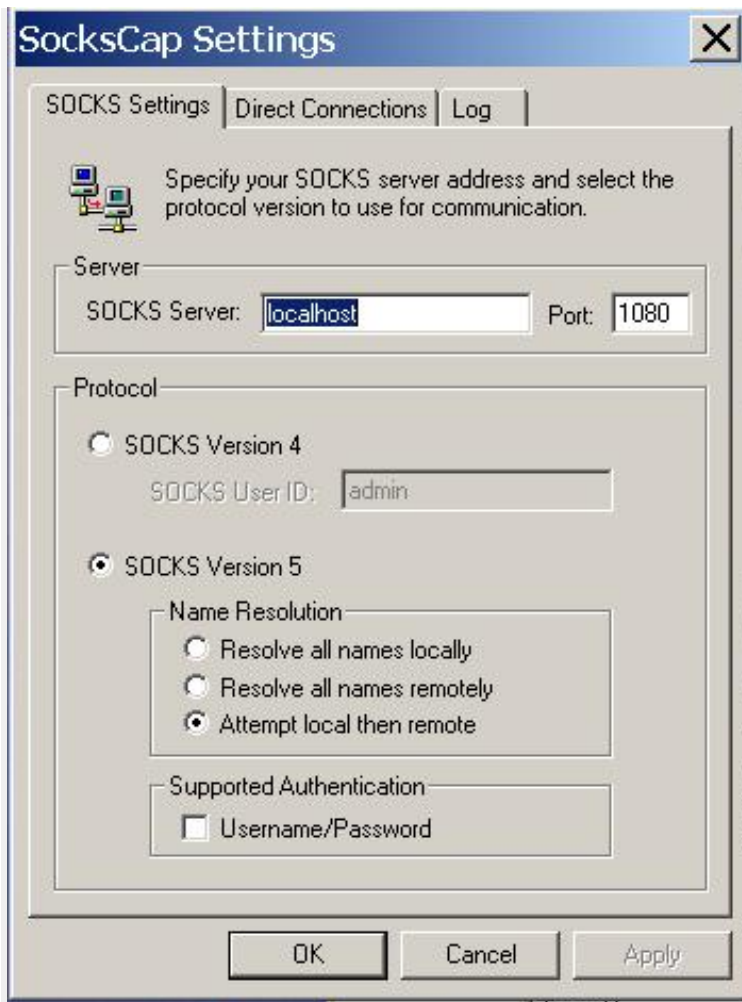


4. Enter SOCKS server localhost

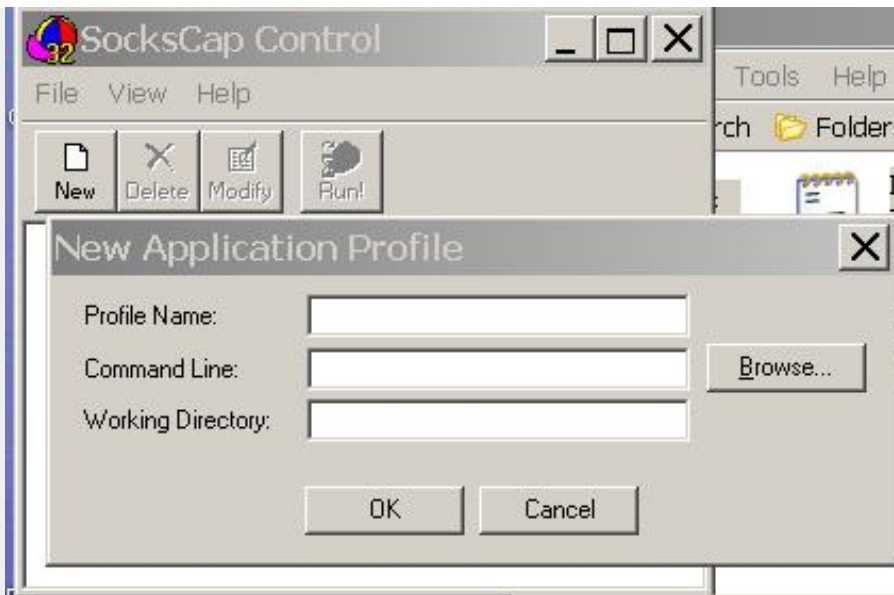
Port 1080

Protocol: SOCKS Version 5

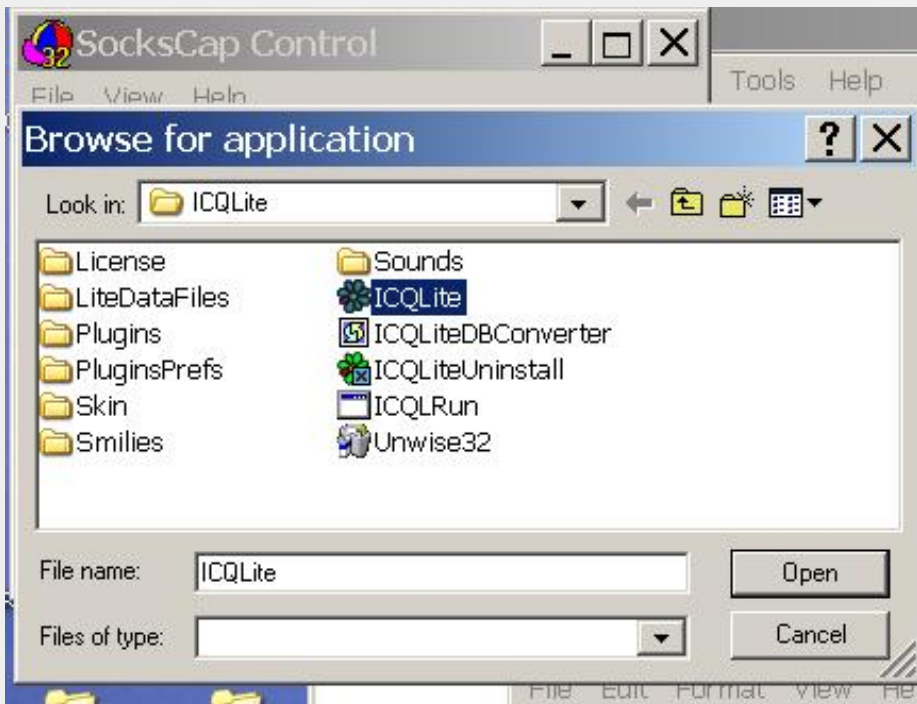
Name Resolution: Attempt local then remote



5. Click OK
6. Click the New button on SocksCap Control
7. Click on Browse



8. Browse to your ICQ folder in the Program Files folder of your drive which has your Windows installation, select the icq executable (may be icqlite.exe or icq.exe), and click on Open.



9. Click on the OK button in the "New Application Profile" dialog

box to close it.

10. Double click on the ICQLite icon or ICQ icon that appears in the SocksCap Control window, to launch it using SocksCap.

11. Click on Setup in the ICQ window that appears



12. Select "Using Firewall" and "Not Using Proxy" in the Connection Settings dialog box that appears

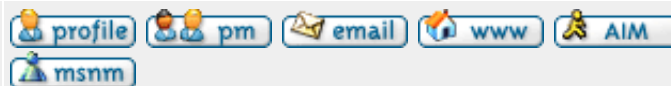


13. Click OK to close the Connection Settings dialog box..

14. Sign In to ICQ as usual.

15. When you wish to launch ICQ in future, you will need to open SocksCap and repeat step 10 (double click on the icq/icqlite icon).

[Back to top](#)



Display posts from previous:



[HTTP-Tunnel.com Forum Index -> Documentation](#)

All times are GMT

Jump to:

You **can** post new topics in this forum

You **can** reply to topics in this forum

You **cannot** edit your posts in this forum

You **cannot** delete your posts in this forum

You **cannot** vote in polls in this forum

Powered by [phpBB](#) © 2001, 2005 phpBB Group