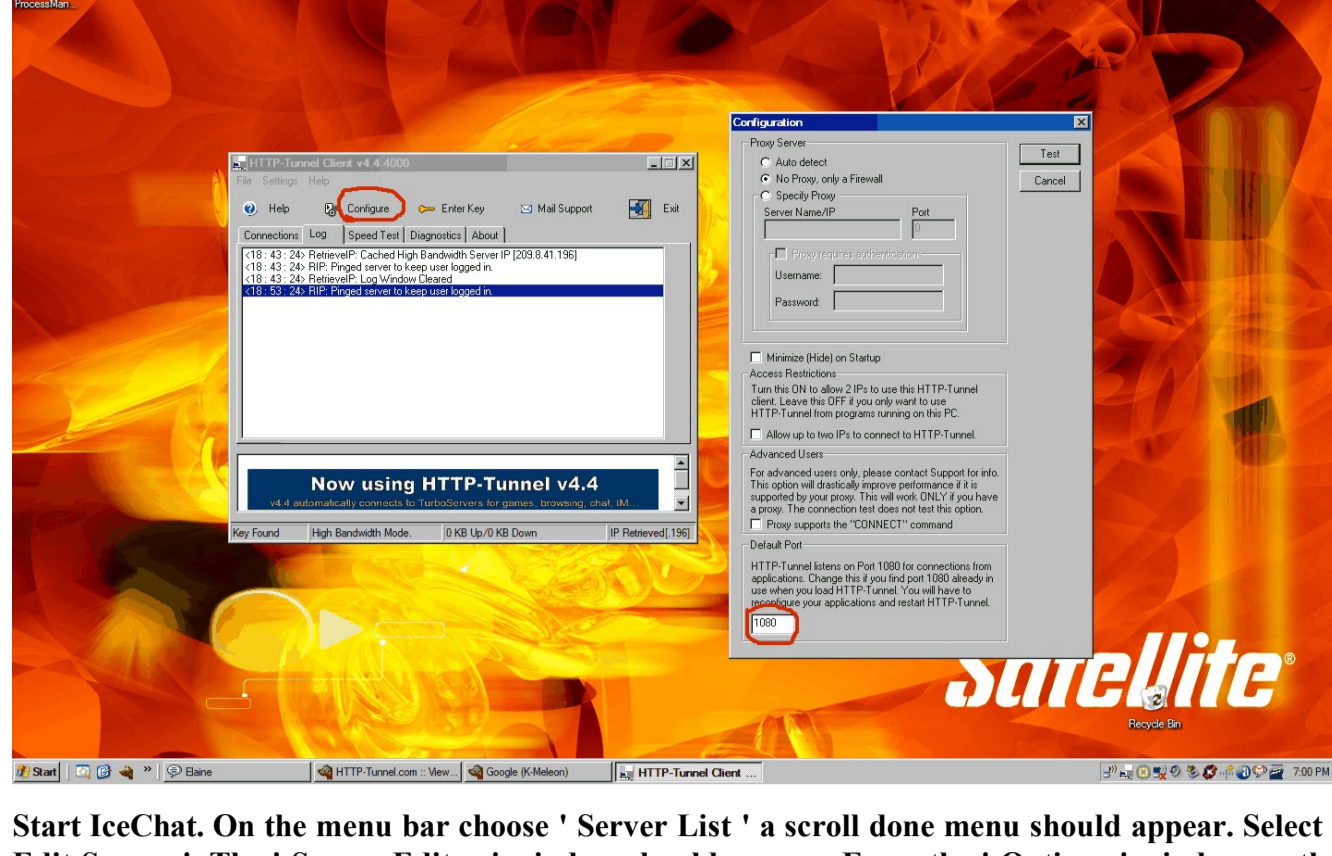


This guide will show you how to configure IceChat to use HTTP Tunnel. HTTP Tunnel does not provide technical support for this product.

Once you have Http-Tunnel installed, run the application, The main window will appear, choose the configure option. There you will be presented with three ( 3 ) options.

1. You can Select Auto detect if you want Http-Tunnel to detect your settings.
2. No Proxy, only a firewall if this is appropriate.
3. Specify Proxy, Here you will enter the IP address and Port number of the proxy that you use.

Complete 1 of the 3 options, then click test, the client will bind to port 1080 and localhost by default and connect to the tunnel servers if your settings are correct.



Start IceChat. On the menu bar choose ' Server List ' a scroll down menu should appear. Select ' Edit Server '. The ' Server Editor ' window should appear. From the ' Options ' window on the left select ' Proxy ' The ' Proxy Settings ' interface should appear. Put a check mark in the box: ' Connect with Proxy Server '. Put a check mark in the box: ' Proxy Server '. Put a check mark in the box: ' For me. Experimenting with these settings may help determine which will work best for you. In ' Proxy IP ' enter 127.0.0.1 and in ' Proxy Port ' enter 1080. Then ' Click ' Save and Connect Now. You can view IceChat connecting to the network I underlined connecting through HTTP Tunnel.

