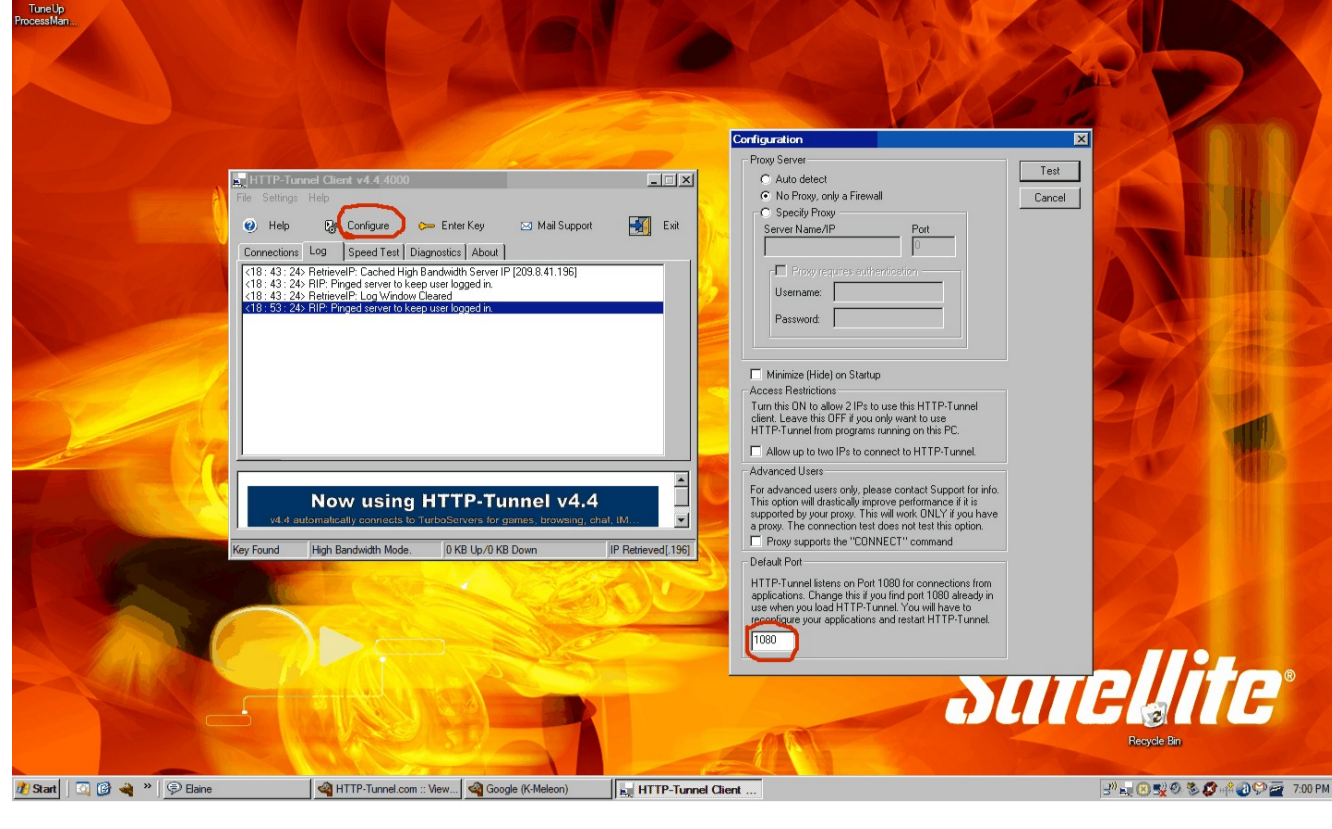


This guide will show you how to configure Internet Explorer to work with Http-Tunnel.

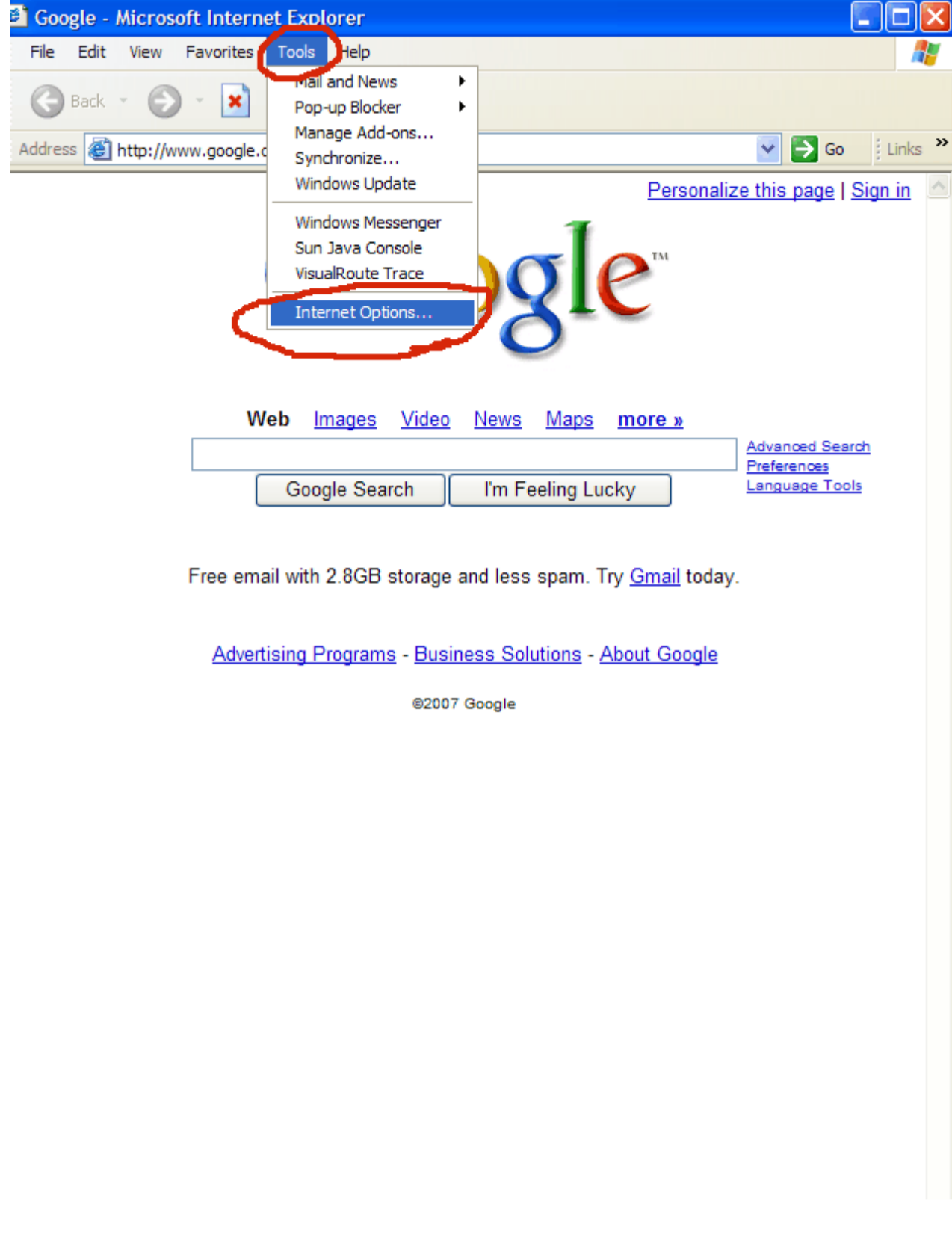
Once you have Http-Tunnel installed, run the application, The main window will appear, choose the configure option. There you will be presented with three ( 3 ) options.

1. You can Select Auto detect if you want Http-Tunnel to detect your settings.
2. No Proxy only a firewall if this is appropriate.
3. Specify Proxy, Here you will enter the IP address and Port number of the proxy that you use.

Complete 1 of the 3 options, then click test, the client will bind to port 1080 and localhost by default and connect to the tunnel servers if your settings are correct.



Open Internet Explorer, Go to Tools on the Menu bar and 'Click' it. A pull down list should appear, scroll to 'Internet Options' and 'Click' it. The Internet Options window should appear.



'Click' on the Connections Tab. In the lower right the LAN Settings radio button should be, 'Click' it, The Local Area Network ( LAN ) Settings window should appear. Remove the check mark from the options box ( Automatically detect settings. ) Put a check mark in the Proxy server box then 'Click' the Advanced button. The Proxy Settings window should appear. In HTTP field type in 127.0.0.1 or localhost. 127.0.0.1 works best in most cases. In the Port field enter 1080. Then put a check mark in the box, ( Use the same proxy server for all protocols. ) You should see all remaining fields except SOCKS then have the same values as you entered into the HTTP field. ( Using the 'SOCKS' method is explained in other tutorials.) 'Click' OK, OK, OK, as you exit. Close Internet Explorer, Start the tunnel client, then restart Internet Explorer. You should see Internet Explorer loading through the tunnel.

