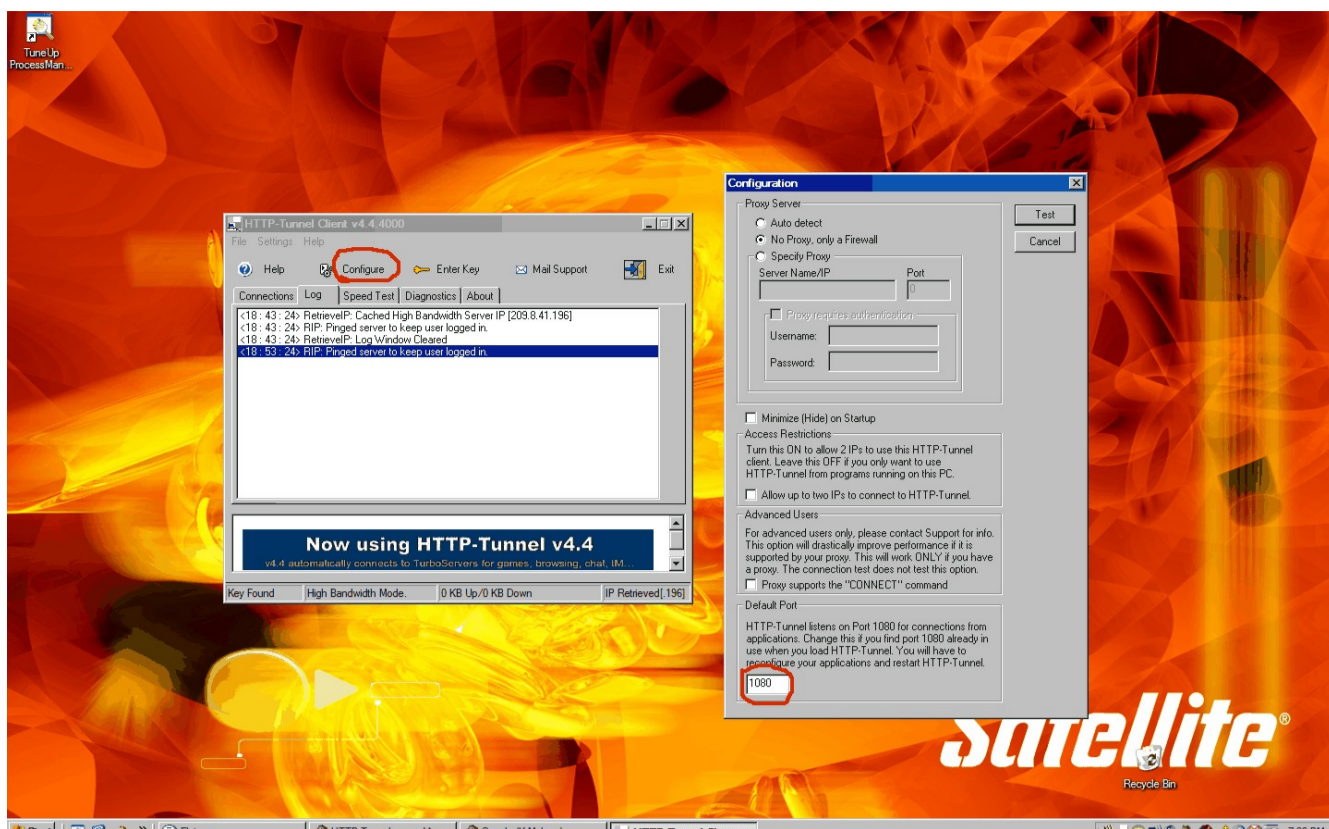


This guide will show you how to configure K-Meleon to use Http-Tunnel.

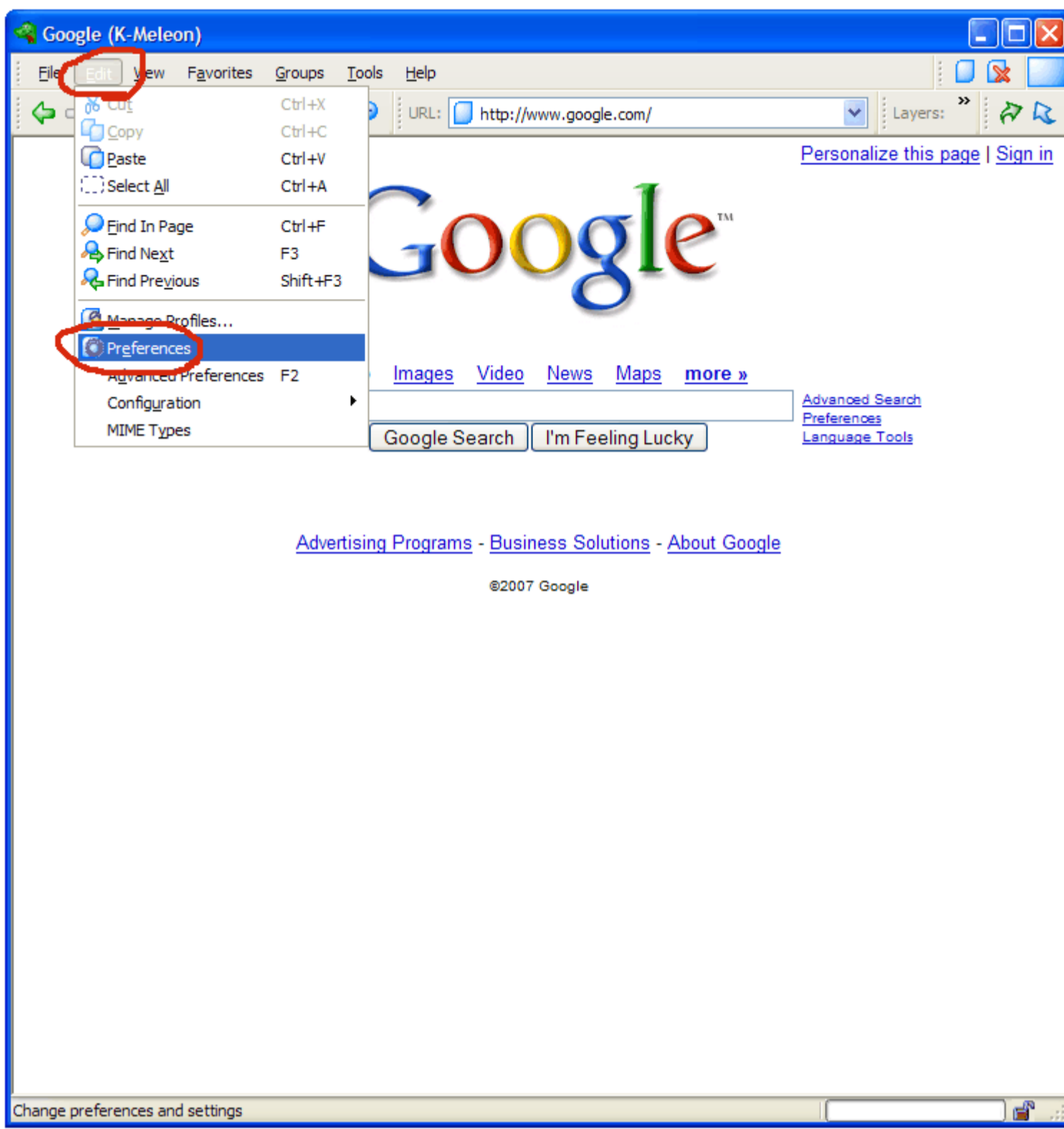
Once you have Http-Tunnel installed, run the application, The main window will appear, choose the configure option. There you will be presented with three (3) options.

1. You can Select Auto detect if you want Http-Tunnel to detect your settings.
2. No Proxy, only a firewall if this is appropriate.
3. Specify Proxy, Here you will enter the IP address and Port number of the proxy that you use.

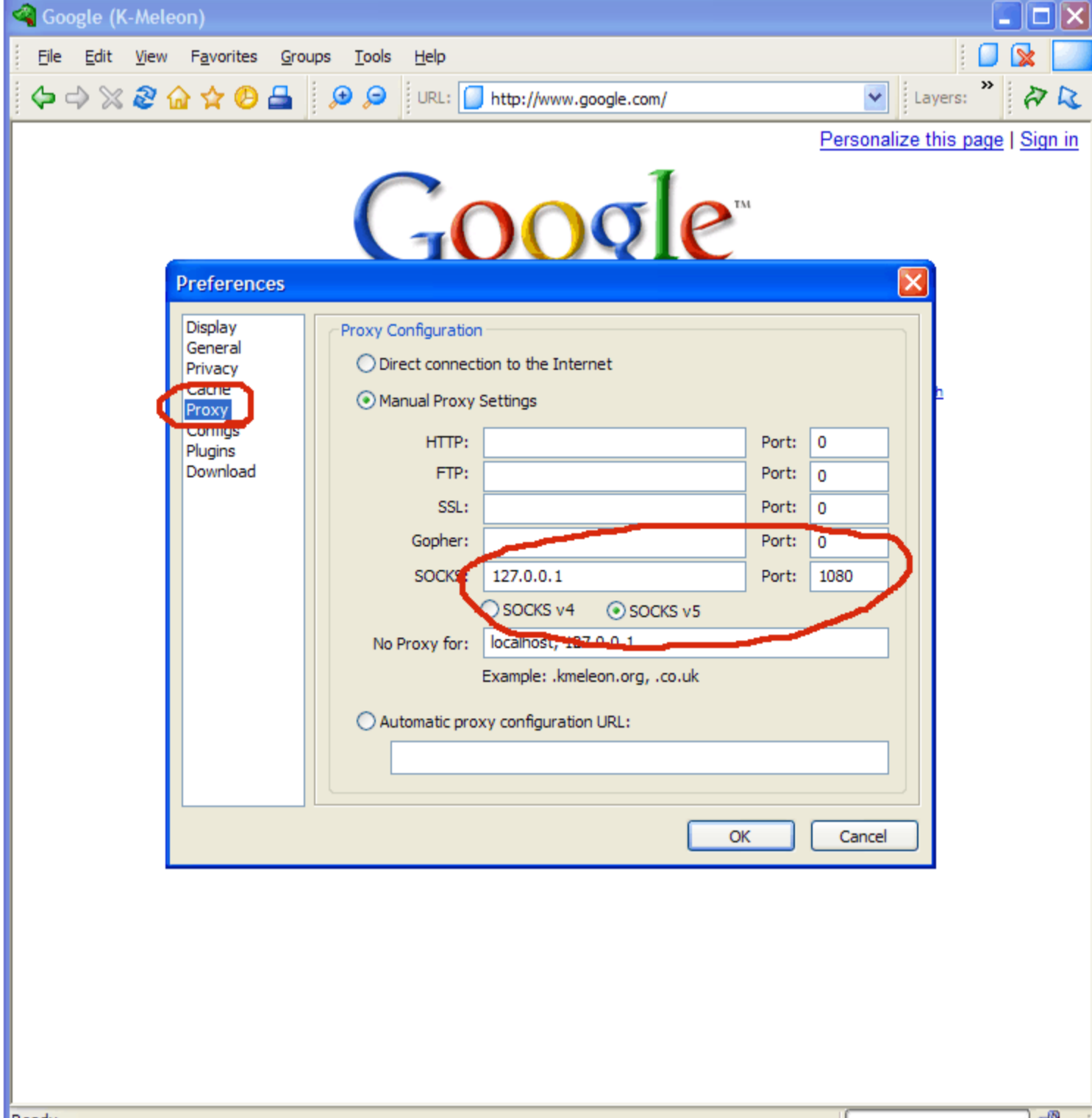
Complete 1 of the 3 options, then click test, the client will bind to port 1080 and localhost by default and connect to the tunnel servers if your settings are correct.



Open K-Meleon. On the menu bar ' Click ' Edit a pull down list appears, scroll down to Preferences and ' Click ' on Preferences. The Preferences dialog window should appear.



On the left of the Preferences window you are presented with various options. Scroll down to the Proxy option and ' Click ' it. The Proxy Configuration interface should appear. Put a dot in the ' Manual Proxy Settings ' field. In the SOCKS area enter 127.0.0.1 and it Port enter 1080 select either SOCKS v4 or v5 (v5 works best in most cases) . Now ' Click ' OK as you exit. Close and restart K-Meleon. You should see K-Meleon making connections through the tunnel.



K-Meleon is a lite and fast browser. It is not bloated. You may need to download a plug-in or two as you go along. But you will load only those that you need. Thus keeping it clean and fast.