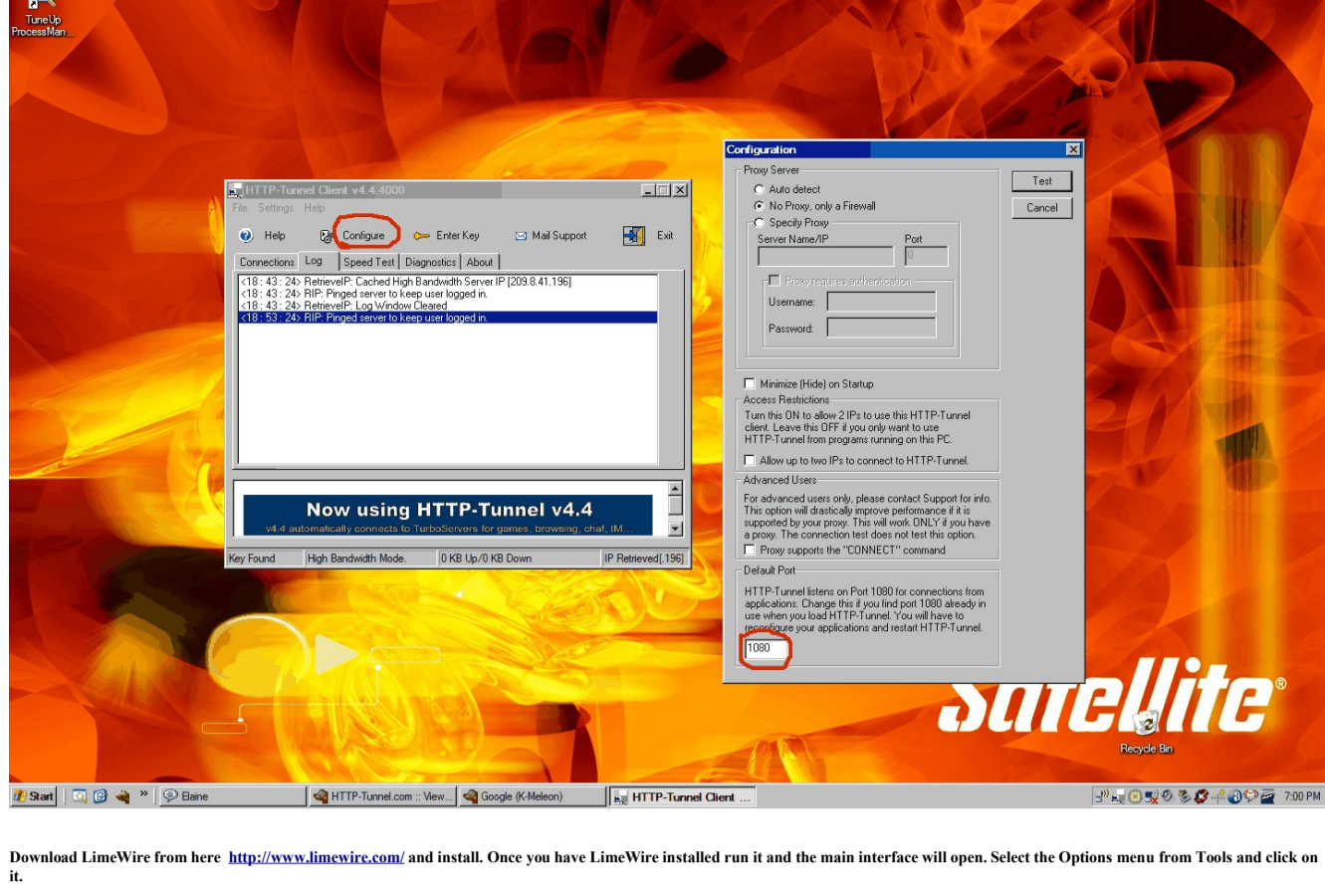


These instructions are for the basic configuration to get LimeWire to work with HttP-Tunnel. Except for proxy configuration LimeWire will install with default settings that are compatible with HttP-Tunnel. Later on you can go into **Options** from the **Tools** tab and select more advanced settings such as BitTorrent support and percentage of bandwidth to use for downloads.

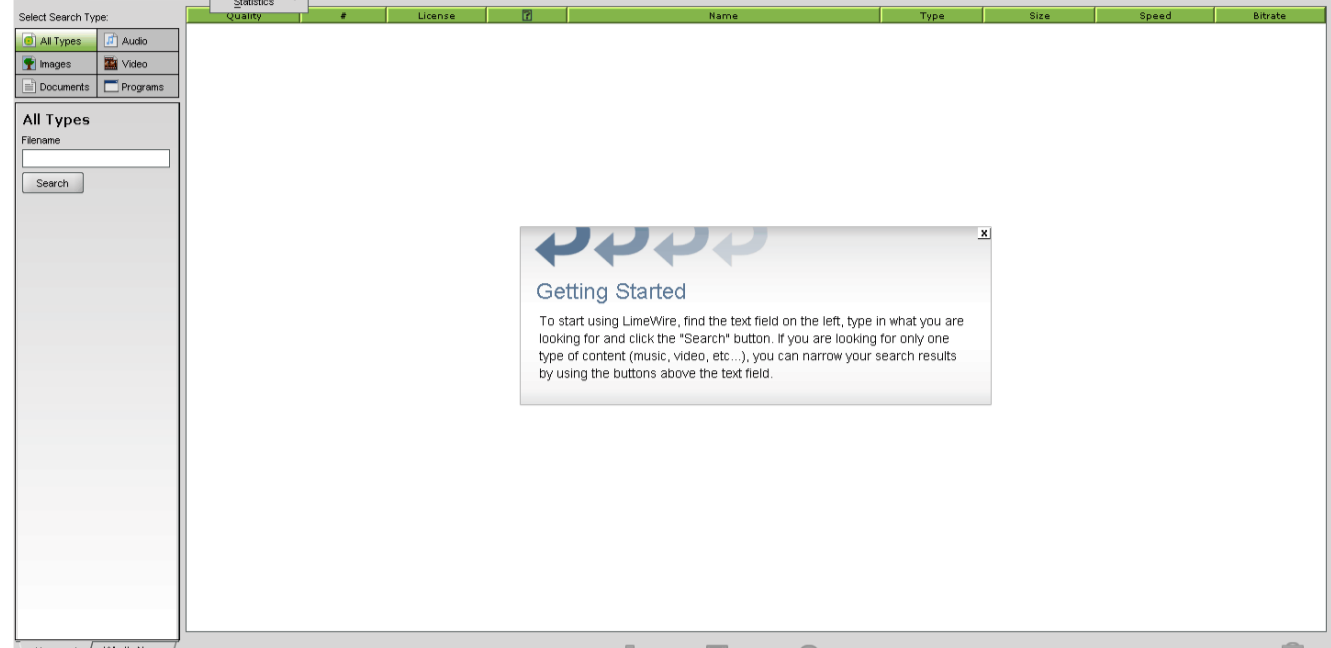
Once you have HttP-Tunnel installed, run the application. The main window will appear, choose the configure option. There you will be presented with three (3) options.

1. You can test if you want HttP-Tunnel to detect your settings.
2. No Proxy only a few will if this is appropriate.
3. Specify Proxy. Here you will enter the IP address and Port number of the proxy that you use.

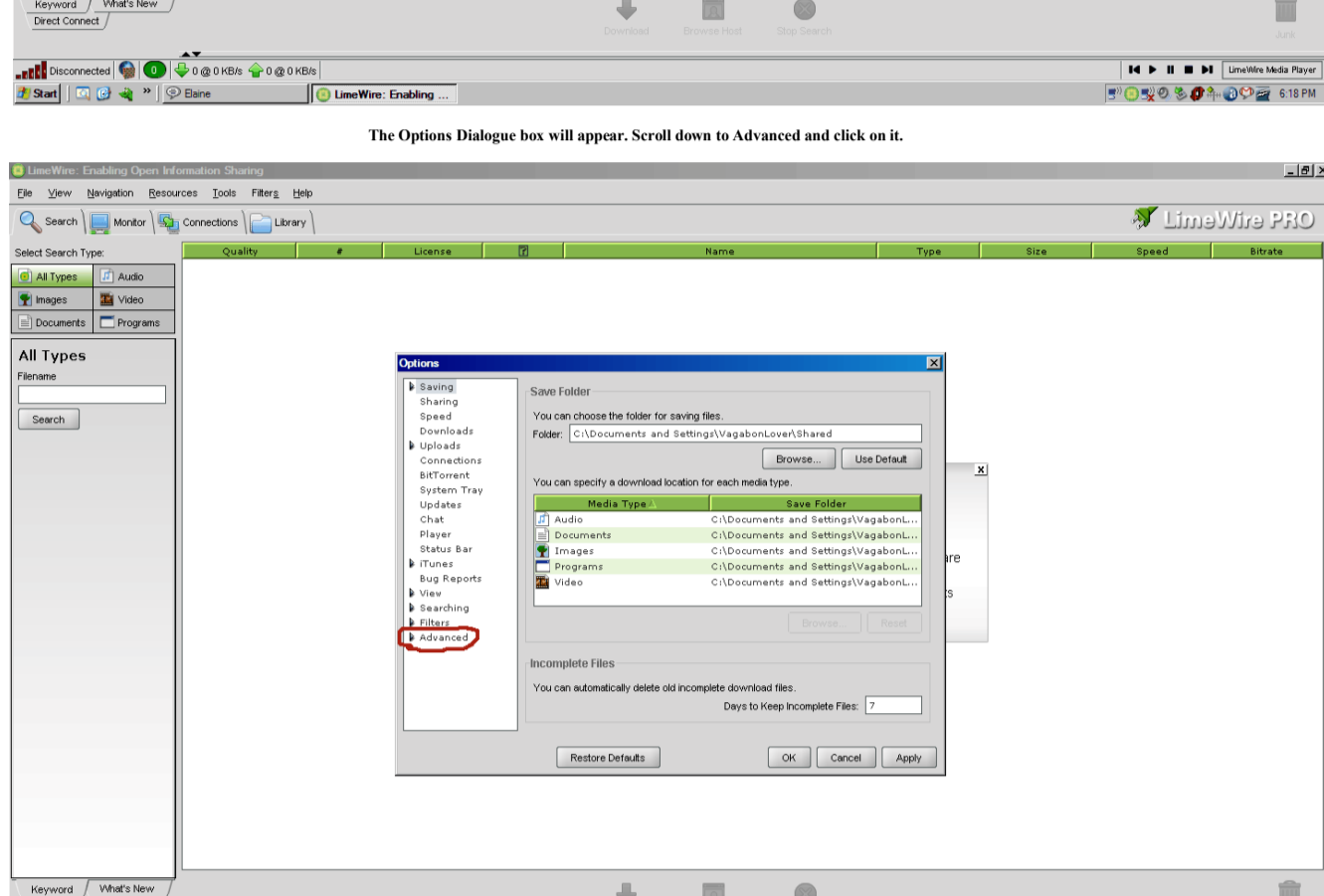
Complete 1 of the 3 options, then click test, the client will bind to port 1080 and localhost (127.0.0.1) by default and connect to the tunnel servers if your settings are correct.



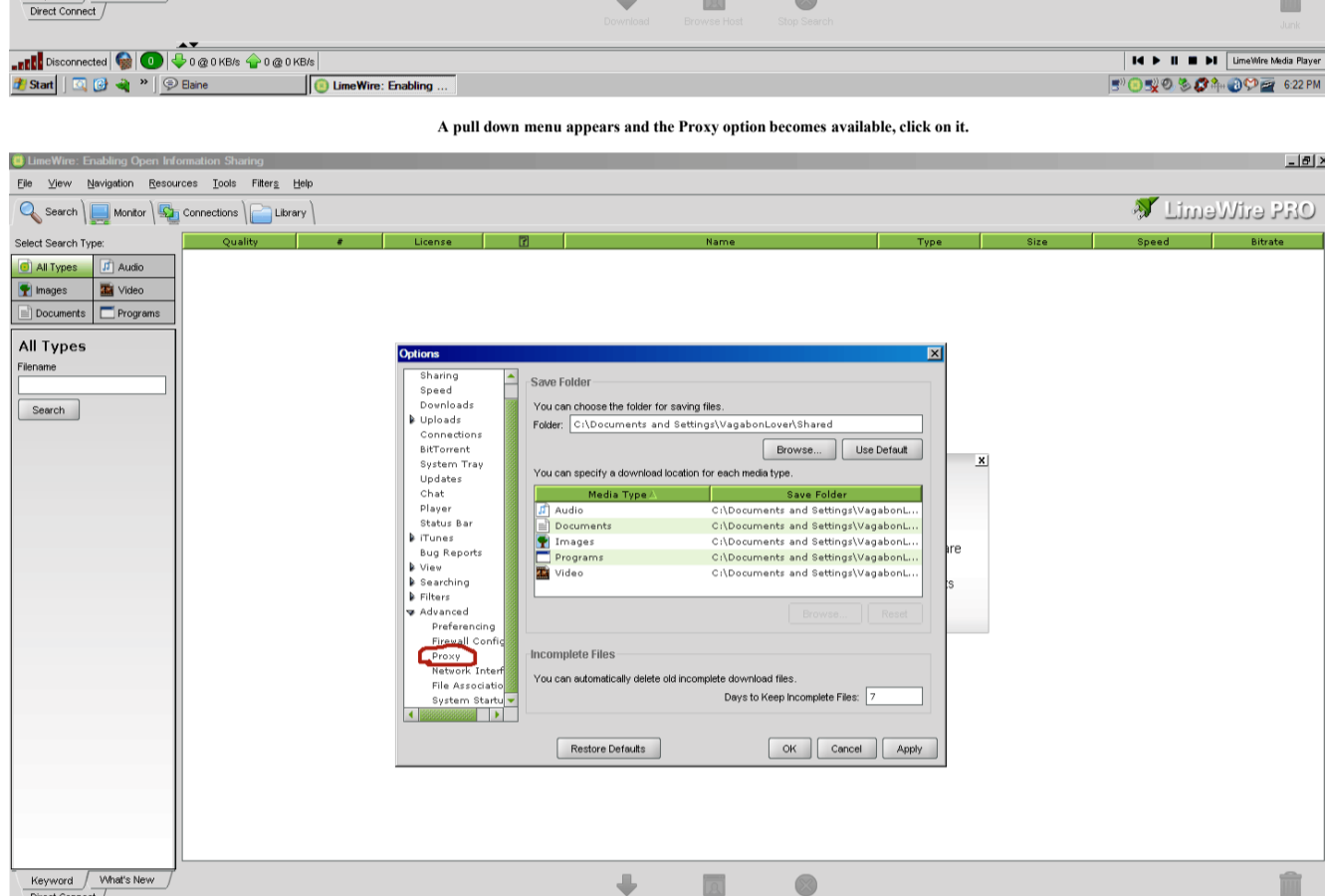
Download LimeWire from here <http://www.limewire.com/> and install. Once you have LimeWire installed run it and the main interface will open. Select the Options menu from Tools and click on it.



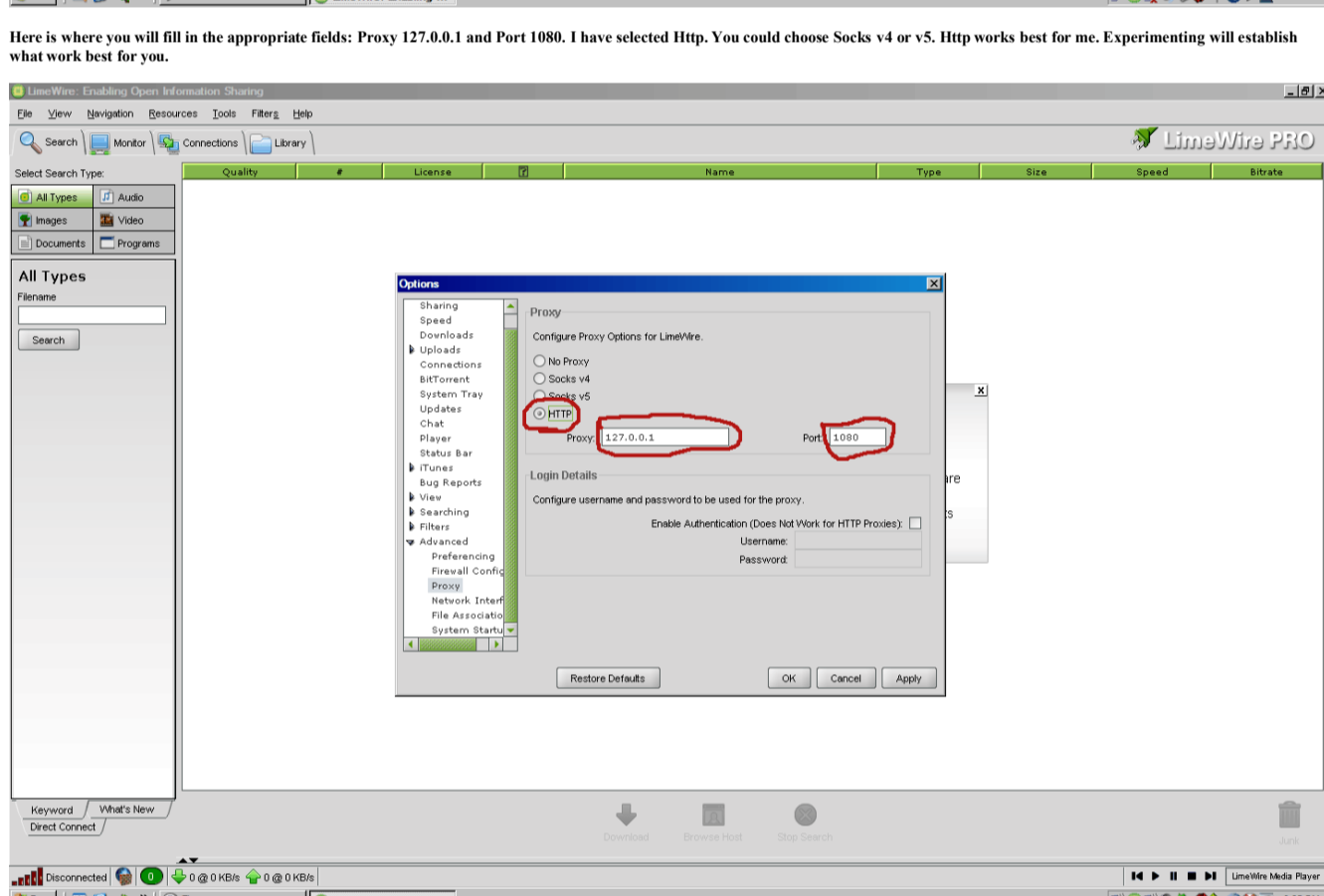
The Options Dialogue box will appear. Scroll down to Advanced and click on it.



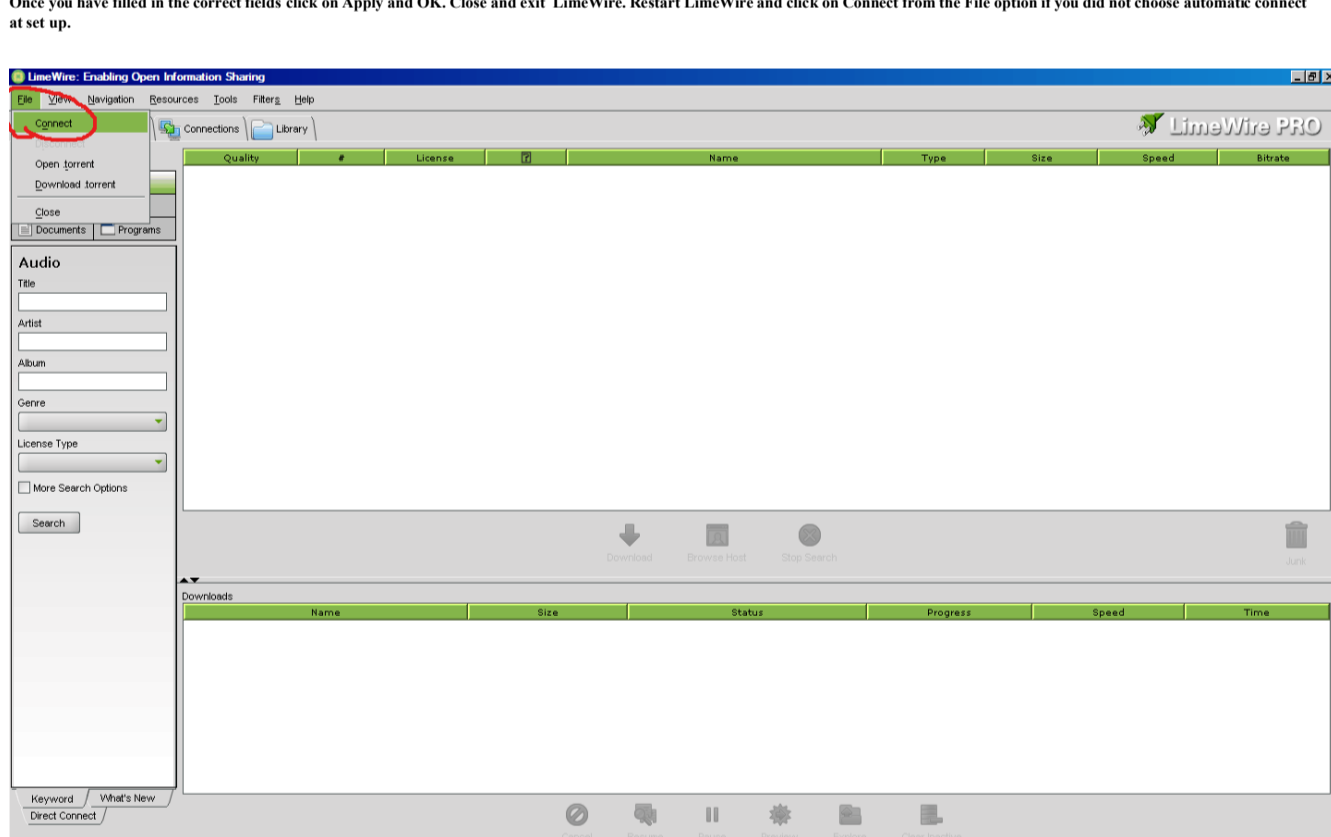
A pull down menu appears and the Proxy option becomes available, click on it.



Here is where you will fill in the appropriate fields: Proxy 127.0.0.1 and Port 1080. I have selected HttP. You could choose Socks v4 or v5. HttP works best for me. Experimenting will establish what work best for you.

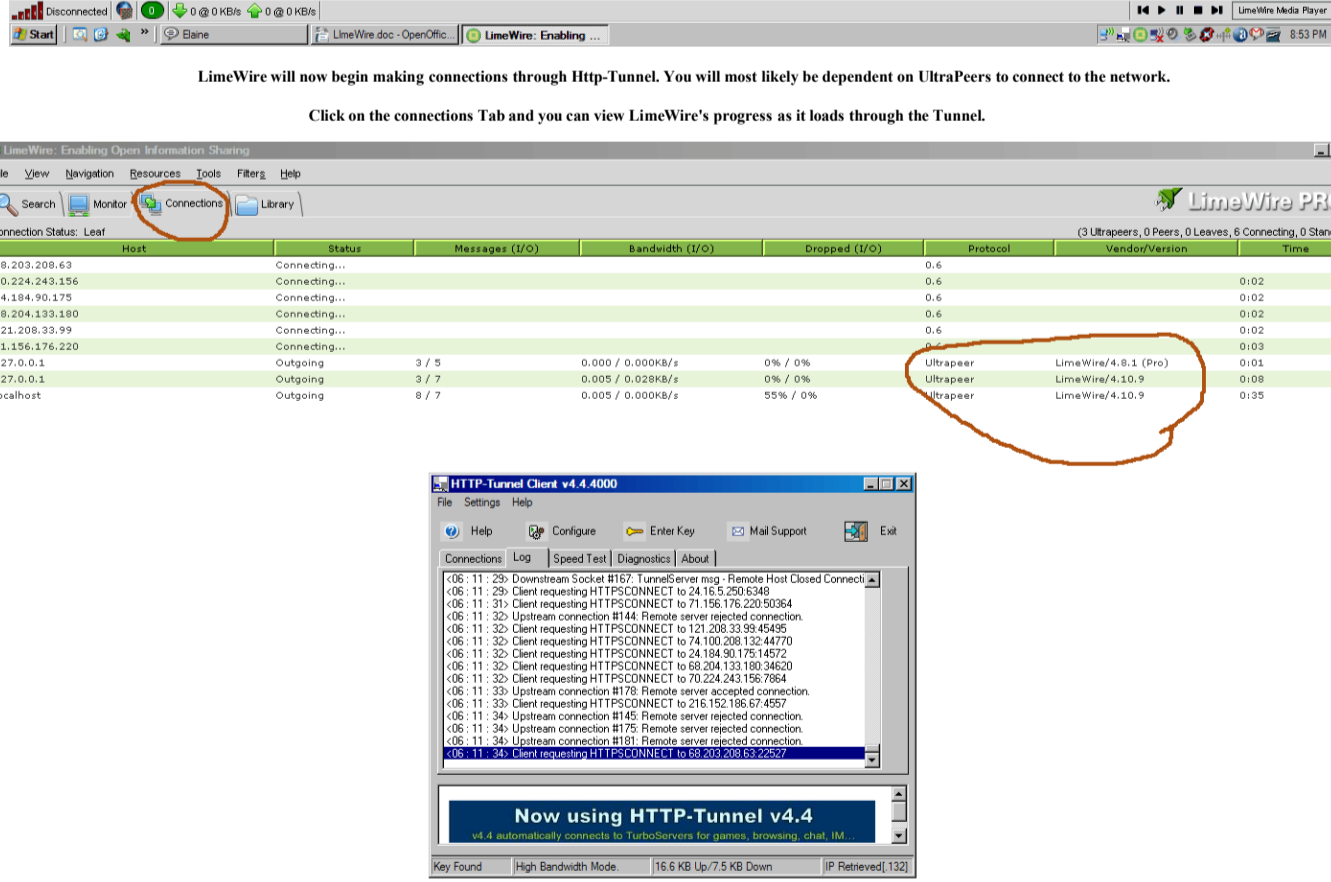


Once you have filled in the correct fields click on Apply and OK. Close and exit LimeWire. Restart LimeWire and click on Connect from the File option if you did not choose automatic connect at you setup.

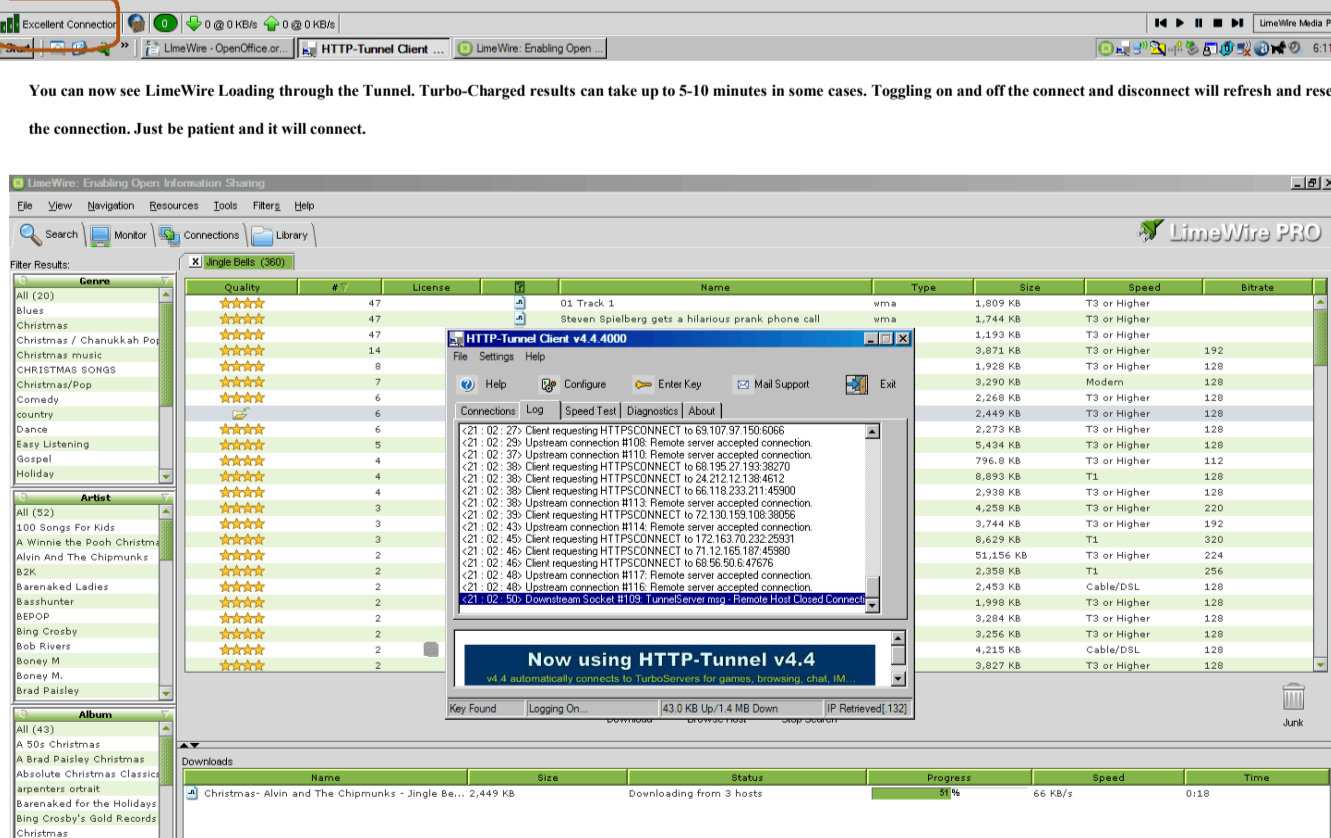


LimeWire will now begin making connections through HttP-Tunnel. You will most likely be dependent on UltraPeers to connect to the network.

Click on the connections Tab and you can view LimeWire's progress as it loads through the Tunnel.



You can now see LimeWire loading through the Tunnel. Turbo-Charged results can take up to 5-10 minutes in some cases. Toggling on and off the connect and disconnect will refresh and reset the connection. Just be patient and it will connect.



Here I have done a search and am downloading a file. This is a link to a users guide <http://www.limewire.com/english/content/userguide.shtml>

and this one is to a frequently asked questions section <http://www.limewire.com/english/content/userfaq.shtml>