



HTTP-Tunnel.com

HTTP-Tunnel Forums

- [FAQ](#)
- [Search](#)
- [Memberlist](#)
- [Usergroups](#)
- [Register](#)

- [Profile](#)
- [Log in to check your private messages](#)
- [Log in](#)

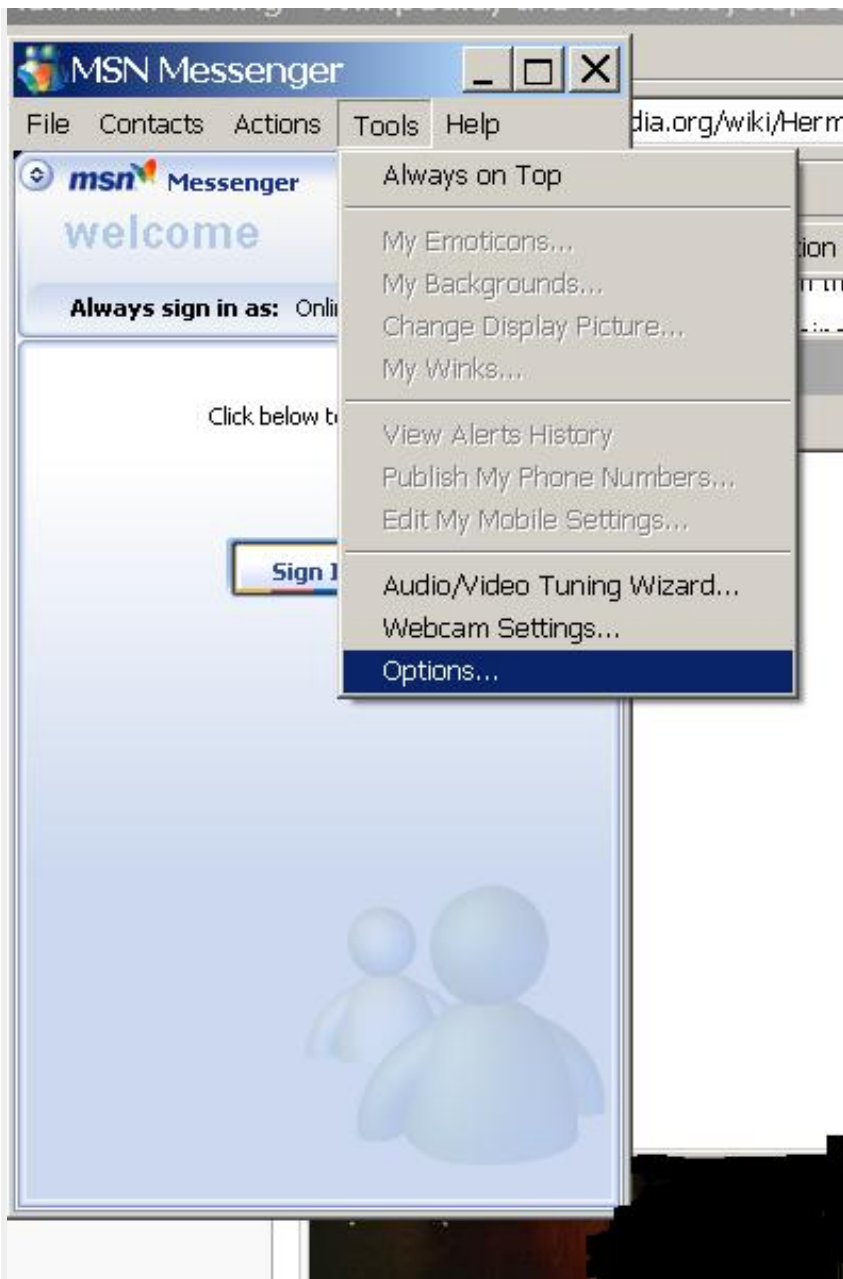
MSN Messenger



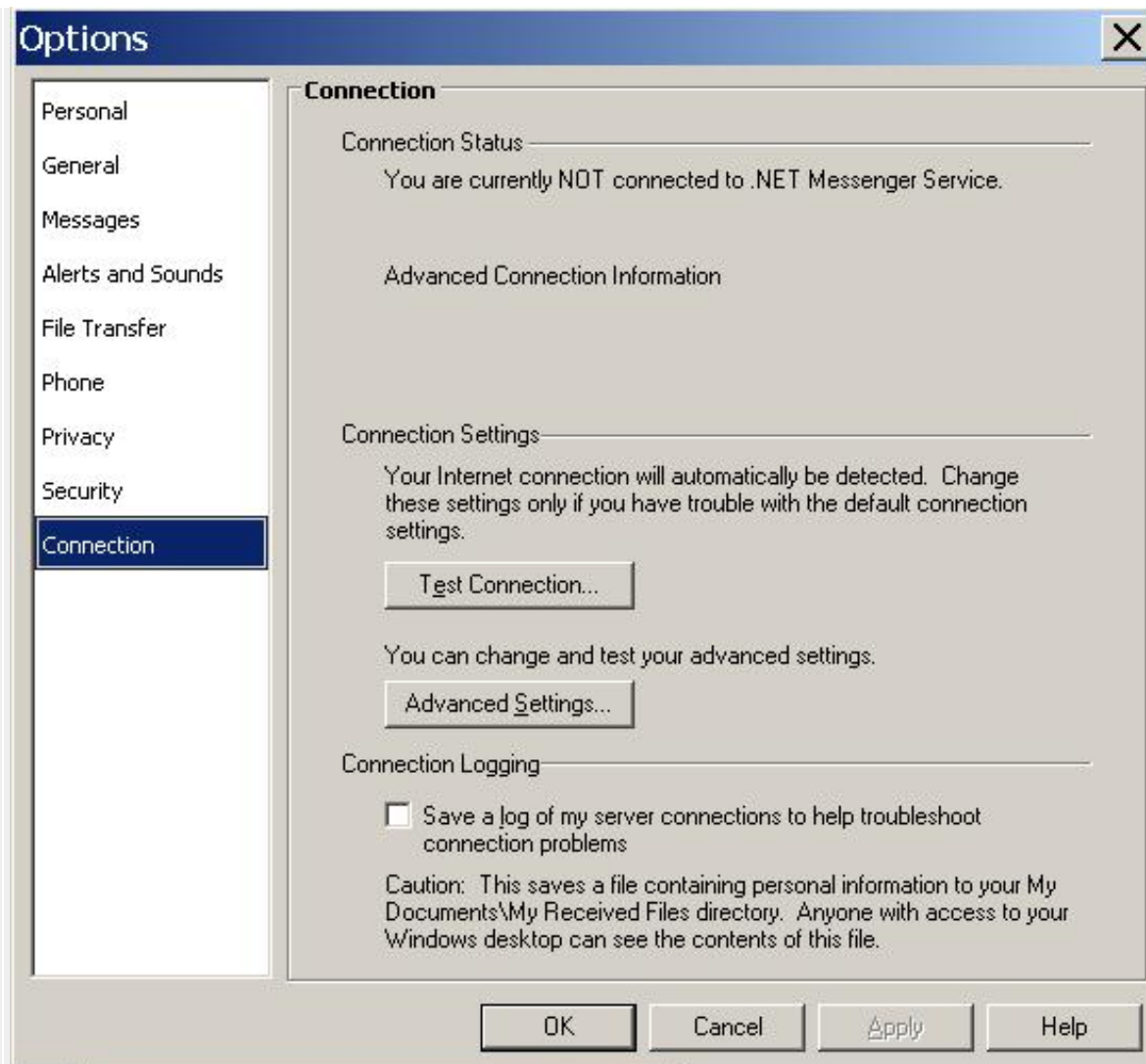
[HTTP-Tunnel.com Forum Index](#) -> [Documentation](#)

[View previous topic](#) :: [View next topic](#)

Author	Message
<p>bluethought Site Admin</p> <p>Joined: 25 Jun 2005 Posts: 2113</p>	<p> Posted: Thu Jul 28, 2005 6:51 am Post subject: MSN Messenger quote</p> <hr/> <p>Video</p> <p>http://www.http-tunnel.com/bt/Videos/MSN.avi</p> <p>If it doesn't play, read the "Readme first" post in this forum for instructions.</p> <p>Guide</p> <ol style="list-style-type: none"> 1. Open MSN Messenger 2. Open the Tools Menu, and click on Options



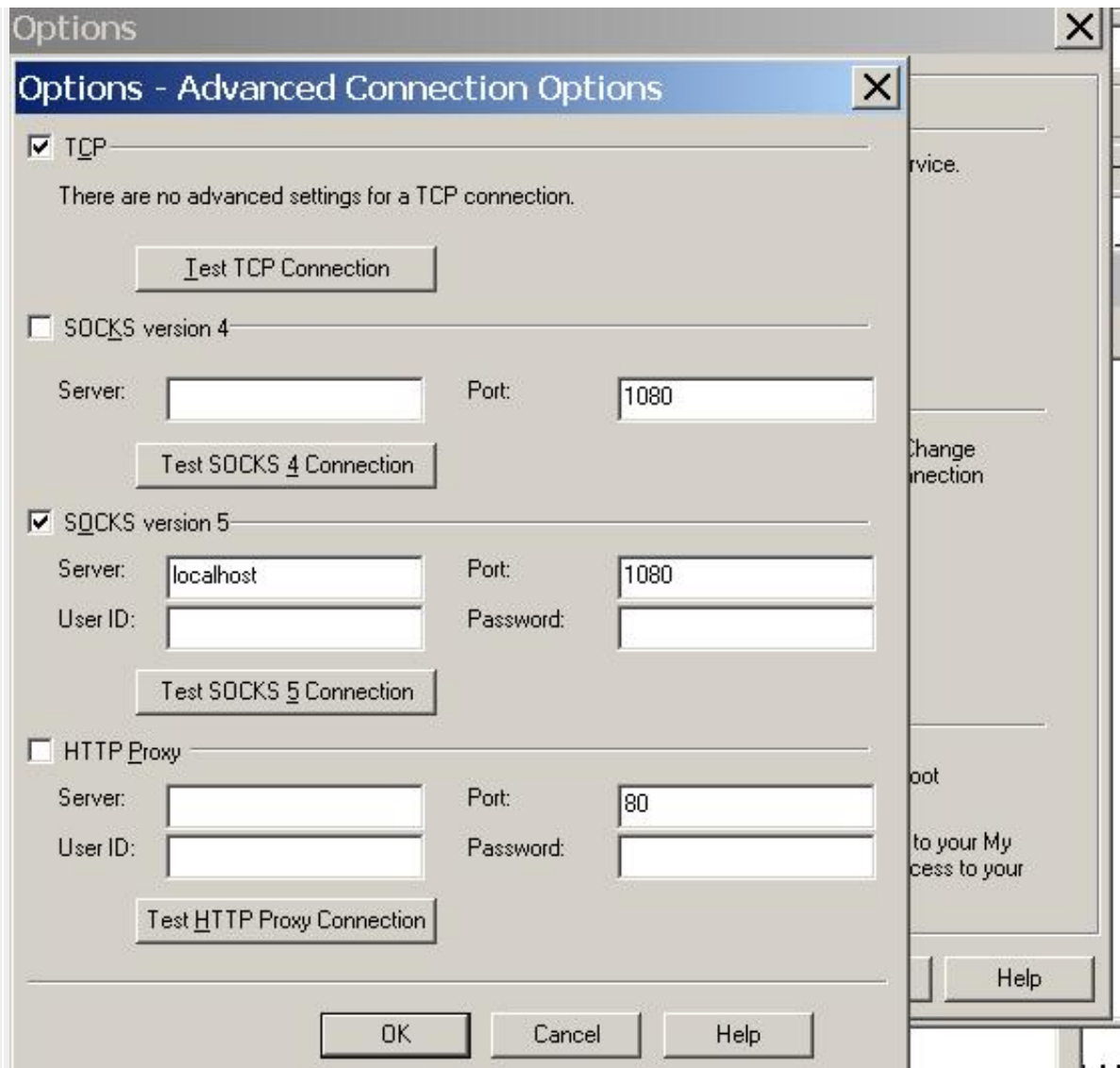
3. Click on Connection on the left to display the Connection tab.



4. Click on Advanced Settings

5. Unselect SOCKS version 4 and HTTP proxy

Select SOCKS version 5, and enter Server: localhost and port: 1080. Leave the User ID and Password blank.



6. Click on OK to exit the Advanced Settings dialog box.

7. Click on OK to exit the Options dialog box.

8. Sign in as you usually would.

Additional thing to do if this doesn't work: Open Internet Explorer, Tools menu, Internet Options, Connections, Lan Settings, and enable the proxy there, set it to address localhost, port 1080.

[Back to top](#)



Display posts from previous:



[HTTP-Tunnel.com Forum Index](#) -> [Documentation](#)

All times are GMT

Page 1 of 1

Jump to:

- You **can** post new topics in this forum
- You **can** reply to topics in this forum
- You **cannot** edit your posts in this forum
- You **cannot** delete your posts in this forum
- You **cannot** vote in polls in this forum

Powered by [phpBB](#) © 2001, 2005 phpBB Group