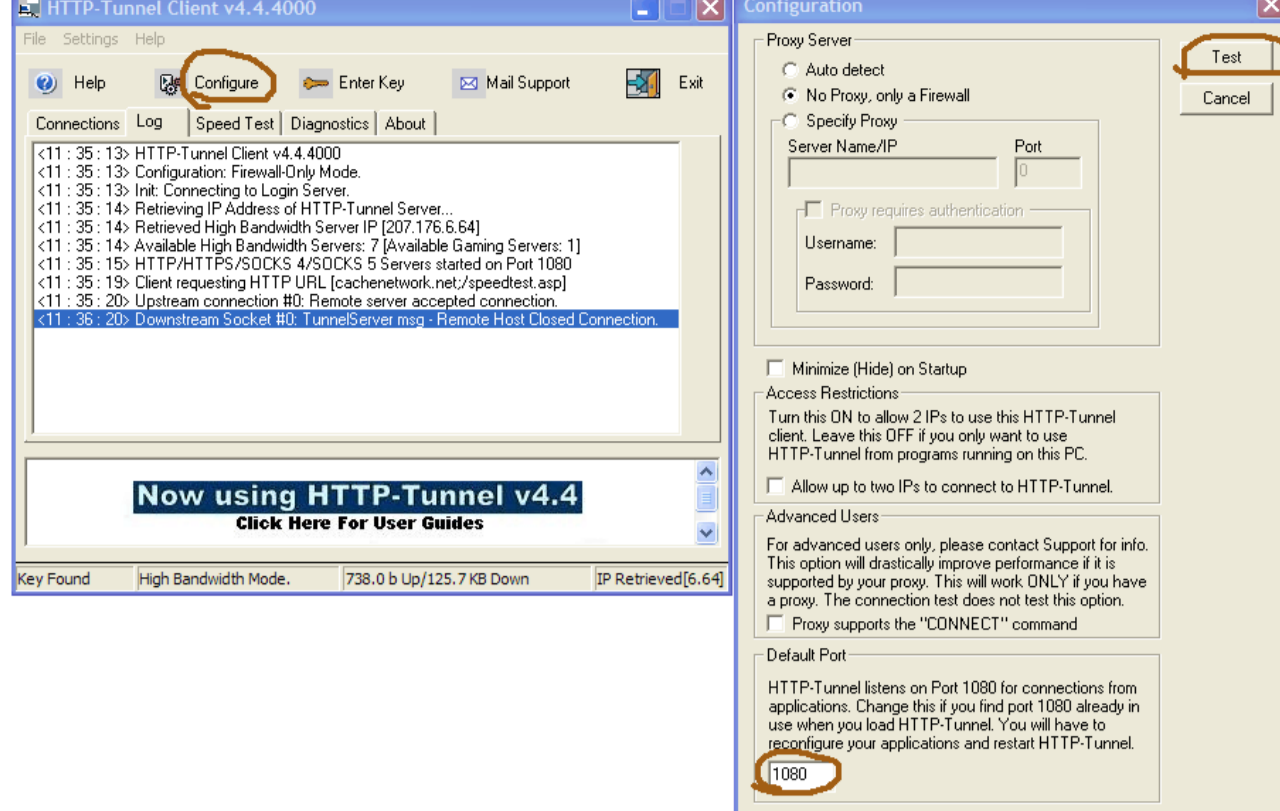


This guide will show you how to configure Pidgin to use Http-Tunnel.

Once you have Http-Tunnel installed, run the application, The main window will appear, choose the configure option. There you will be presented with three (3) options.

1. You can Select Auto detect if you want Http-Tunnel to detect your settings.
2. No Proxy, only a firewall if this is appropriate.
3. Specify Proxy, Here you will enter the IP address and Port number of the proxy that you use. If your proxy requires authorization fill in the appropriate fields.

Complete 1 of the 3 options, then click test, the client will bind to port 1080 and localhost(127.0.0.1) by default and connect to the tunnel servers if your settings are correct.



Open Pidgin. ' Click ' on Tools. A drop down menu appears. Scroll down to ' Preferences ' and ' Click ' it. The Preferences window should appear. ' Click ' the Network tab. Uncheck the ' Autodetect IP address ' and uncheck ' Manually specify range of ports to listen on '. In the ' Proxy Server ' area in the ' Proxy type ' field is a pull down menu. Choose HTTP or SOCKS4 or SOCKS5. Experimenting with these settings may determine which works best for you. Enter in 127.0.0.1 and 1080 in Host and Port as shown. When you are finished ' Click ' the ' Close ' radio button. Log on to Pidgin as usual.

