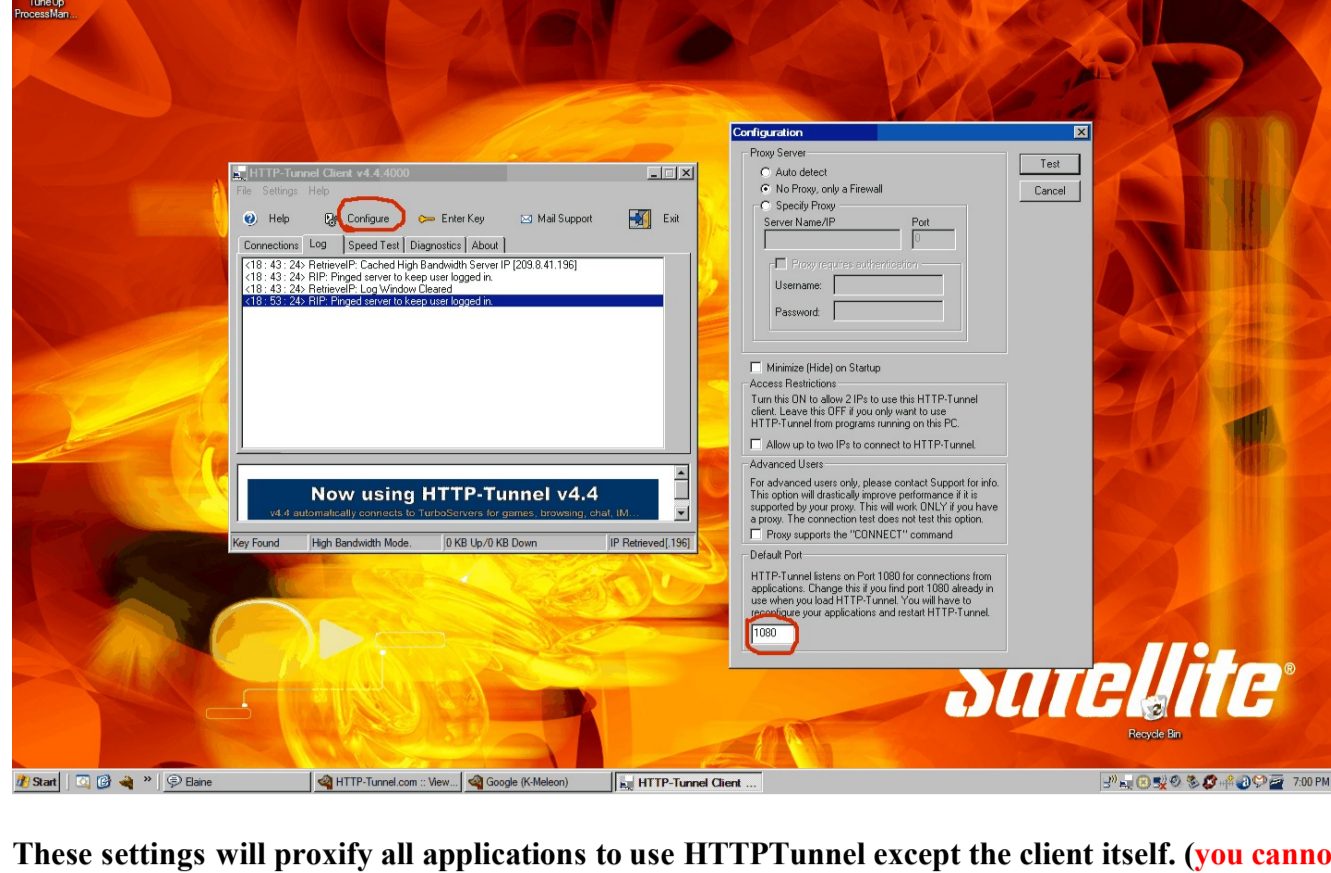


This guide will show you how to configure Proxifier to work with Http-Tunnel and to configure other applications using Proxifier to 'tunnel' through the client.

Once you have Http-Tunnel installed, run the application, The main window will appear, choose the configure option. There you will be presented with three (3) options.

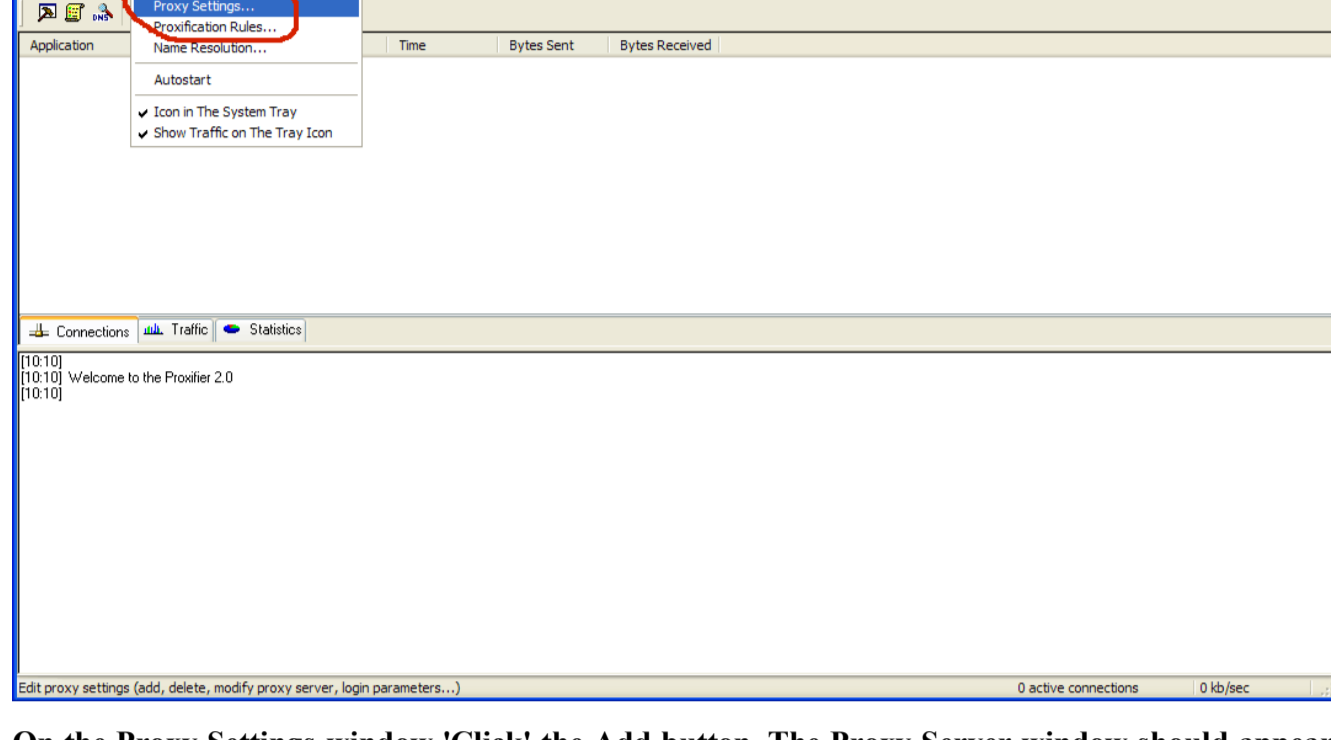
1. You can Select Auto detect if you want Http-Tunnel to detect your settings.
2. No Proxy only a firewall if this is appropriate.
3. Specify Proxy, Here you will enter the IP address and Port number of the proxy that you use.

Complete 1 of the 3 options, then click test, the client will bind to port 1080 and localhost by default and connect to the tunnel servers if your settings are correct.

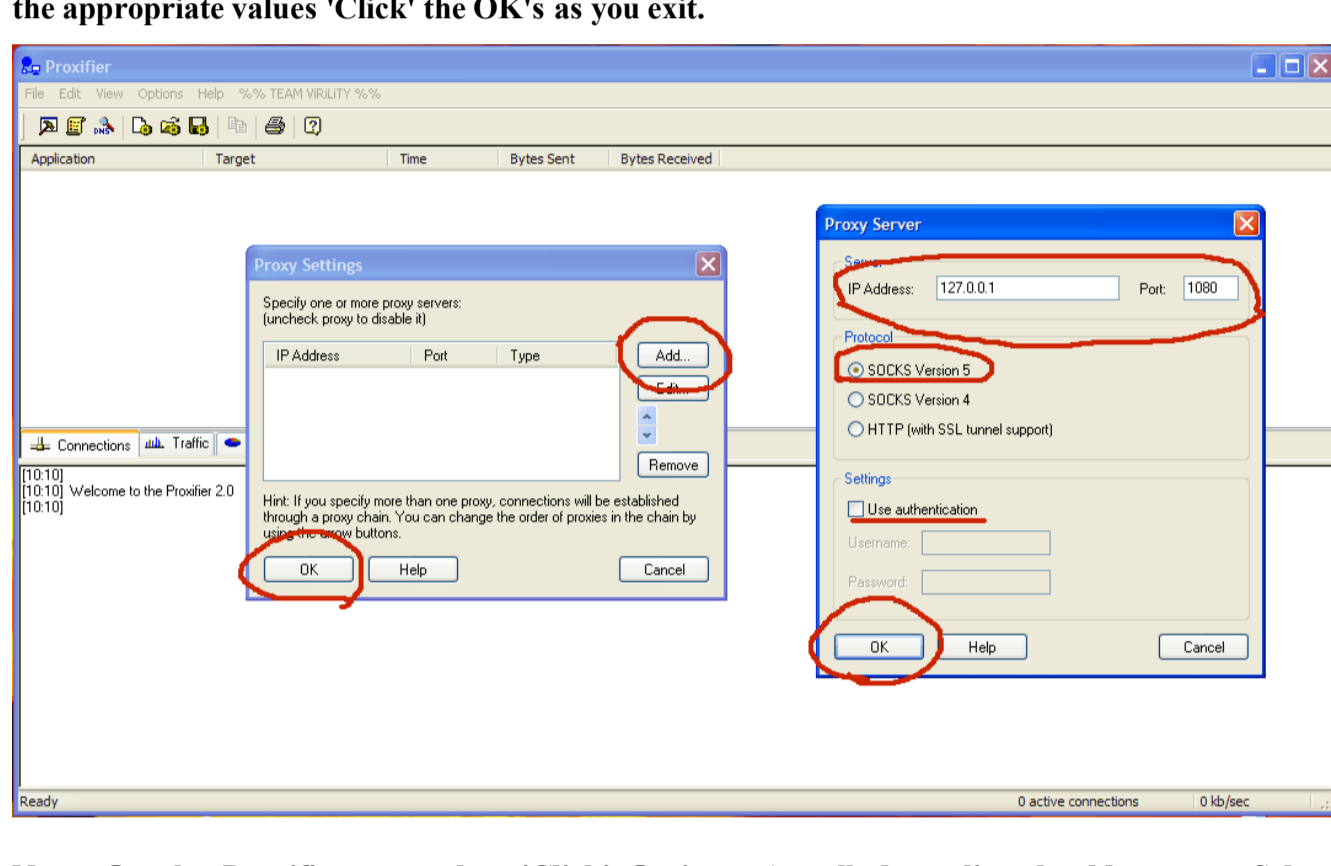


These settings will proxy all applications to use HTTP Tunnel except the client itself. (you cannot very well tunnel 'the tunnel' through 'the tunnel' now can you?) This means that every service, program and application will go through the tunnel. If those applications are heavily UDP dependent this configuration will give the best chance for those to work.

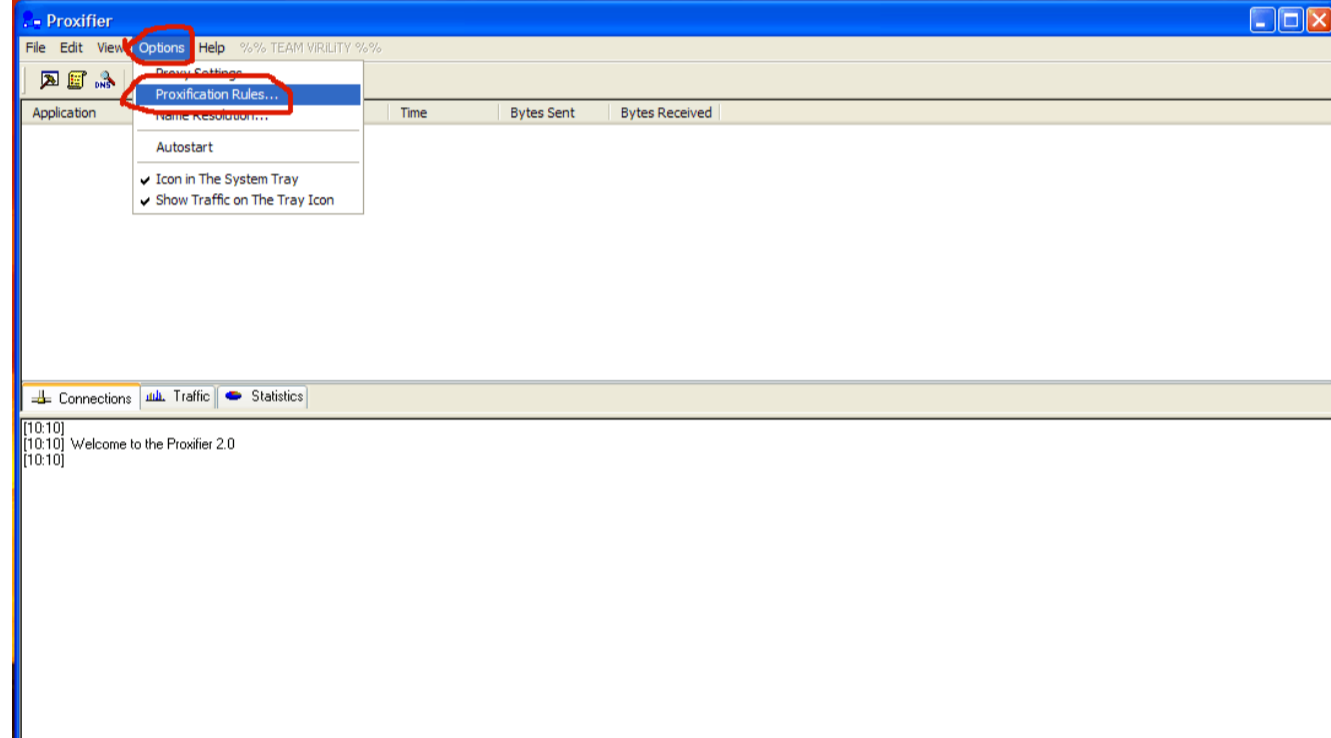
Run Proxifier. On the Menu bar choose Options, a pull down list should appear, select 'Proxy Settings'. The Proxy Settings window should appear.



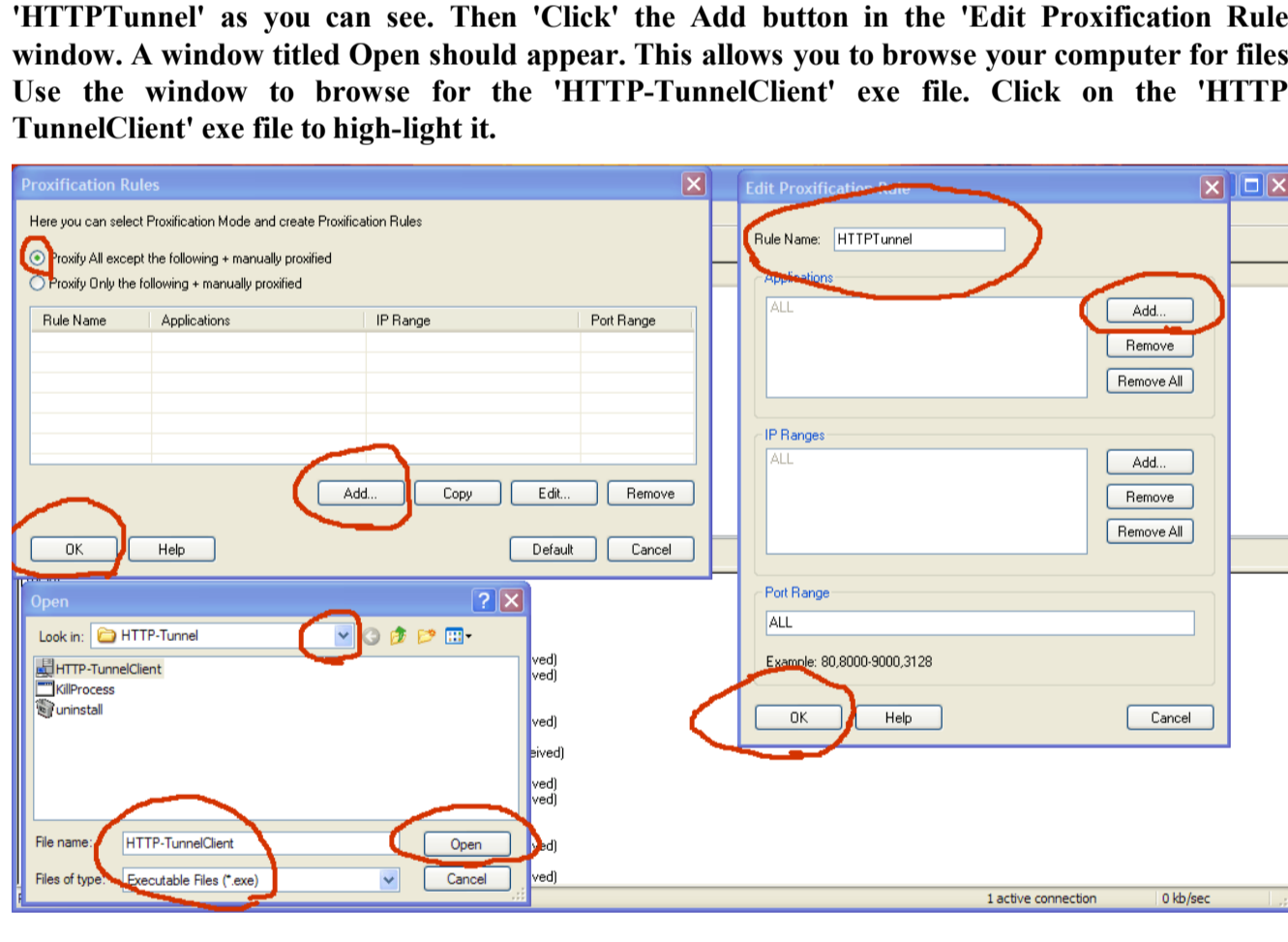
On the Proxy Settings window 'Click' the Add button, The Proxy Server window should appear. In the IP field type in 127.0.0.1 or (localhost) 127.0.0.1 works best in most cases. Then enter 1080 in the Port field. Select 1 of the 3 protocols to use, either SOCKS 4/5 or HTTP. Experimenting with these setting may determine which works best for you. If you are using a Proxy and it requires authentication be sure to fill in the proper fields. After you have completed entering in the appropriate values 'Click' the OK's as you exit.



Next: On the Proxifier menu bar 'Click' Options. A pull down list should appear. Select: Proxification Rules and 'Click' on it.



The 'Proxification Rules' window should appear. Put a 'dot' in 'Proxyify All except the following + manually proxified'. Next 'click' on the Add button the 'Edit Proxification Rule' window should appear. In 'Rule Name' field give a name to your rule. I named the one for the client 'HTTP Tunnel' as you can see. Then 'Click' the Add button in the 'Edit Proxification Rule' window. A window titled Open should appear. This allows you to browse your computer for files. Use the window to browse for the 'HTTP-TunnelClient' exe file to high-light it.



Then 'Click' Open on the window titled Open. You will then see the file has now been loaded into the 'Edit Proxification Rule' window. 'Click' OK on the 'Edit Proxification Rule' window. And then 'Click' OK on the 'Proxification Rules' window. You have now completed the basic set-up of Proxifier. You may want to shut down all applications including the tunnel client. The restart the client and then Proxifier. Most of the times it will not matter. Proxifier is able to accommodate just about any start up sequence. But remember now. Everything but the tunnel is now proxified. Later on once you understand what you are actually doing you can manually proxy things. But as stated earlier this gives programs that are heavily UDP dependent the best chance to work.