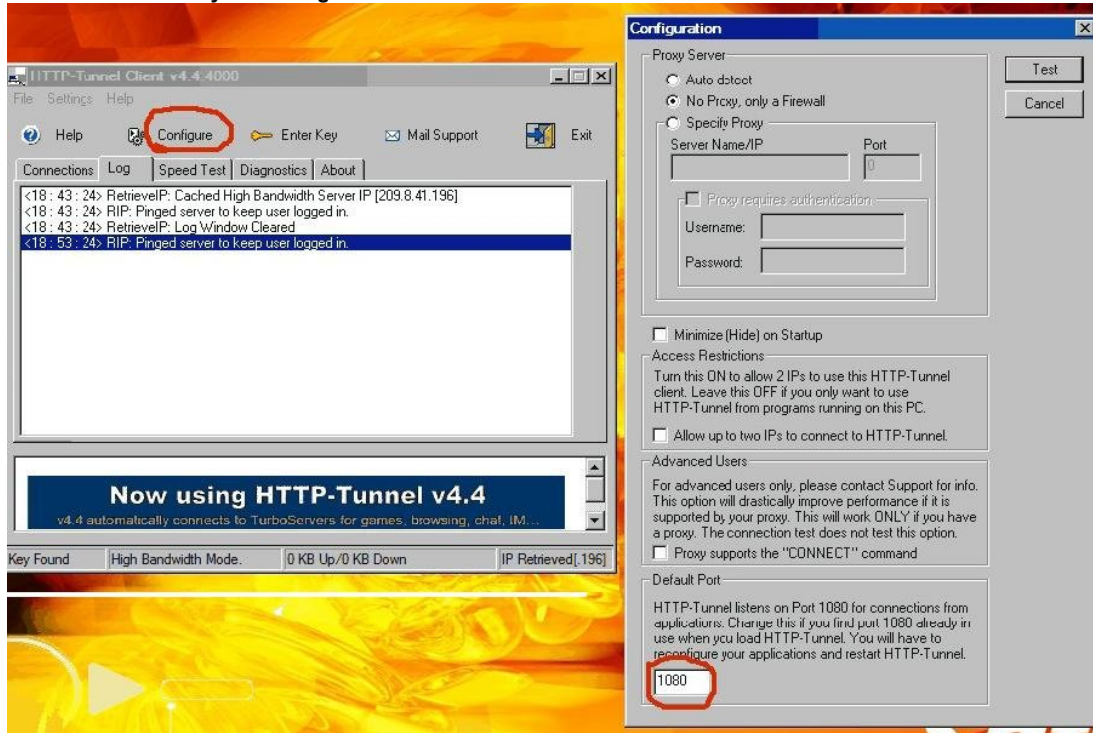


Some programs or applications are not natively configurable. Internet Explorer for example is. Meaning it has a settings area that will enable it to be configured to use a proxy server. When programs or applications are not natively configurable this is when you need a Socksifying or Proxy Agent. Other times, once you have a Program like SOCKSCap configured to use the tunnel it can be simpler to just "Socksify" a program rather than trying to configure the program natively. Make sure if you do Socksify a Program that the program is in it's default settings.

This is a generic guide to configure and use SocksCap (a Socksifying / Proxy Agent) and to configure a program with SocksCap to load through the Tunnel. In this instance we will use Internet Explorer. (you can do with with many other programs, games and P2P)

Once you have Http-Tunnel installed, run the application, The main window will appear, choose the configure option. There you will be presented with three (3) options.

1. You can Select Auto detect if you want Http-Tunnel to detect your settings.
 2. No Proxy only a firewall if this is appropriate.
 3. Specify Proxy, Here you will enter the IP address and Port number of the proxy that you use.
- Complete 1 of the 3 options, then click test, the client will bind to port 1080 and localhost by default and connect to the tunnel servers if your settings are correct.



Download SocksCap from here <http://www.socks.permeo.com/Download/SocksCapDownload/index.asp> and install and run it. When you run SocksCap for the first time a Settings window appears. If not open the control (main) window. The SocksCap Control window should appear. On the menu bar select on file and click it, a pull down list appears. Click on Settings. The SocksCap Settings window should appear.

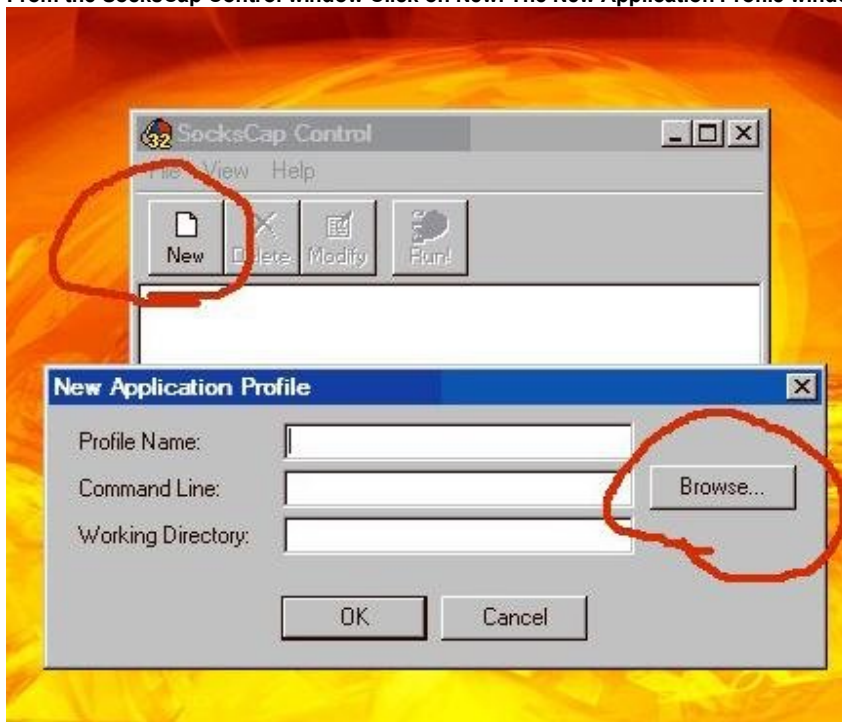


Click on the SOCKS Settings Tab. In the SOCKS Server field type Localhost and in the Port field type 1080. Put a dot in SOCKS Version 5 and a dot in Resolve all names locally. Then click OK.

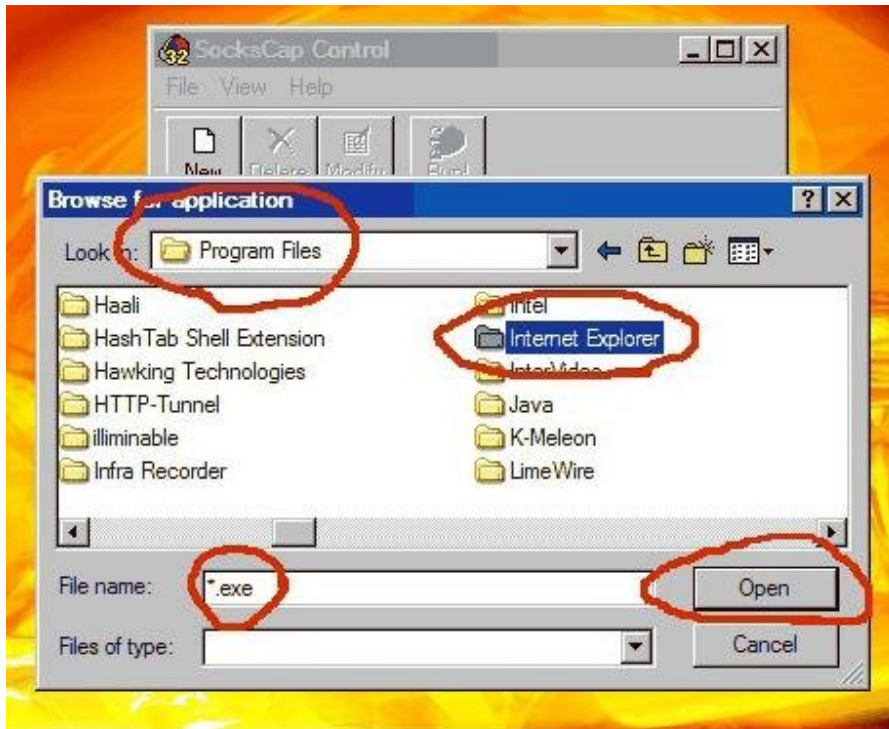
The SocksCap Settings window will disappear and the SocksCap Control window will remain.



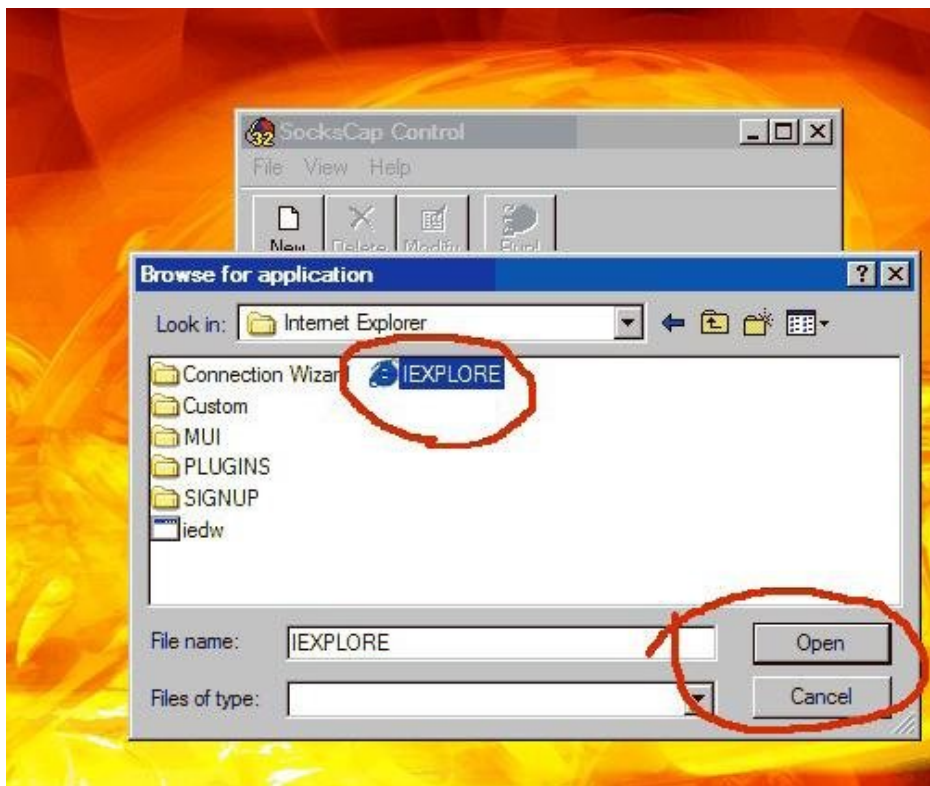
From the SocksCap Control window Click on New. The New Application Profile window appears. Click on Browse.



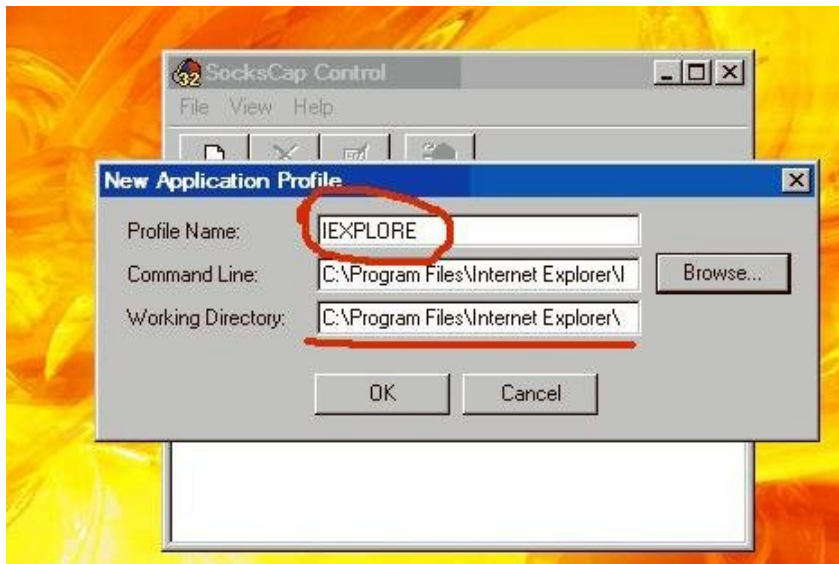
Navigate to the Directory where the program's execution (.exe) file is. Most will be in the Directory 'Program Files' it just depends on where the program was installed to. Internet Explorer in this case is installed in the Program Directory. Now find the folder that contains the execution program and highlight it and Click open.



Highlight the name of the program file. In this instance it is IEXPLORE and Click Open.



The Program file has now been loaded into the New Application Profile dialog box. Click on OK.



The program is now successfully entered into SocksCap Control. Highlight the program and click Run.



You should now see the program loading through the tunnel. (below)

