

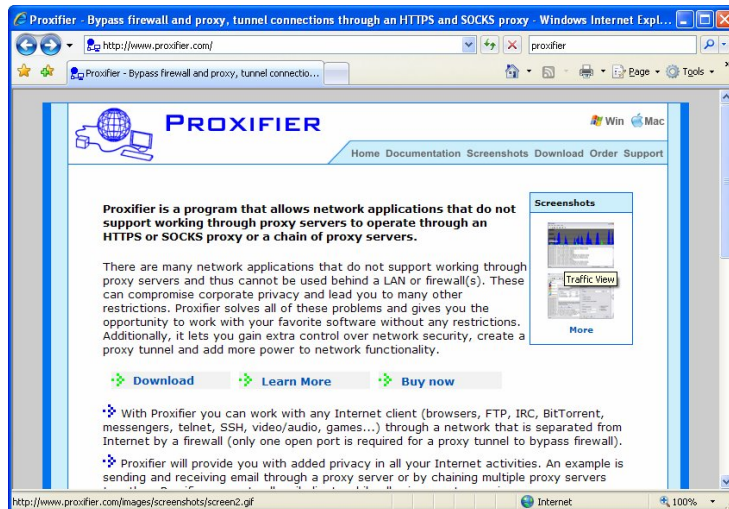
Using World of Warcraft via HTTP-Tunnel

Aaron of HTTP-Tunnel

5/16/07

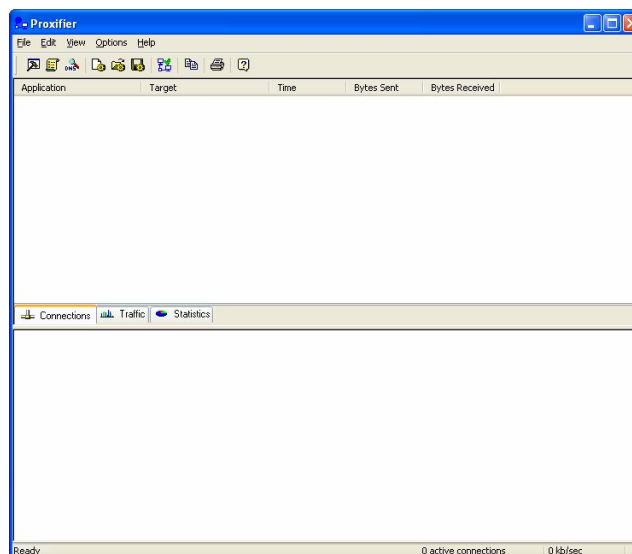
***** Using this document assumes you have HTTP-Tunnel client properly setup and it works fine for other programs.*****

First off download the program "Proxifier" from www.proxifier.com:

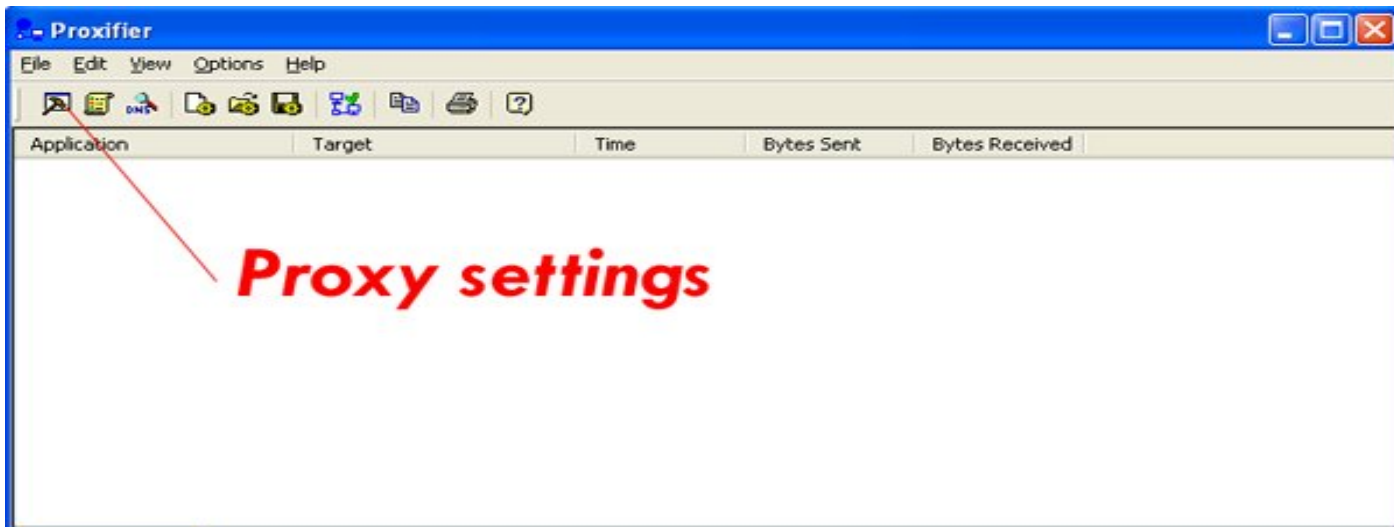


HTTP-Tunnel recommends that you purchase **IF IT WORKS FOR YOU ONLY!** If it works this program will only function for 31 days if you do not purchase it **** THIS HAS ONLY BEEN TESTED WITH PROXIFER 2.6 ****

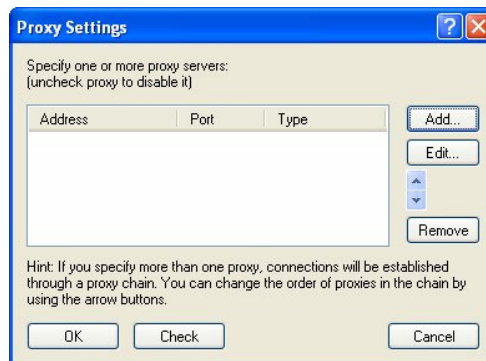
Download and install this program then run it.



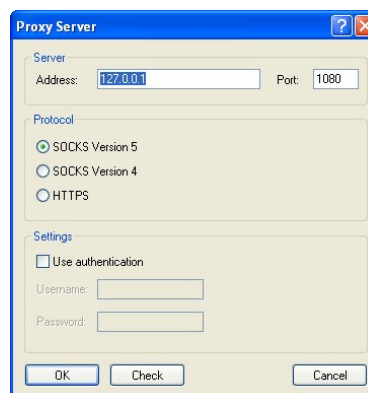
Once at the main menu as depicted in the picture above, click “Proxy Settings”



Once the window opens click “ADD”:



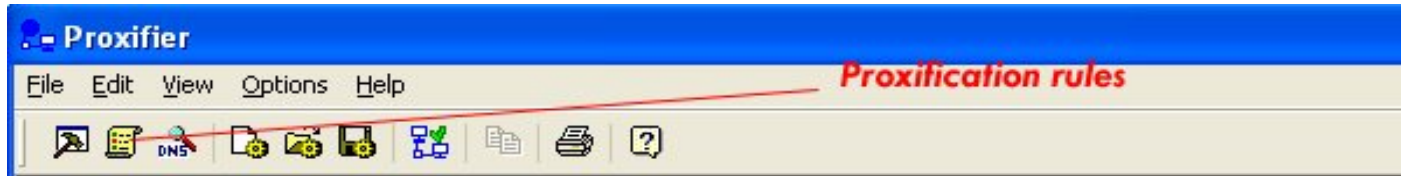
Enter the appropriate proxy information and select ok **(MAKE SURE YOU SELECT SOCKS5)**:



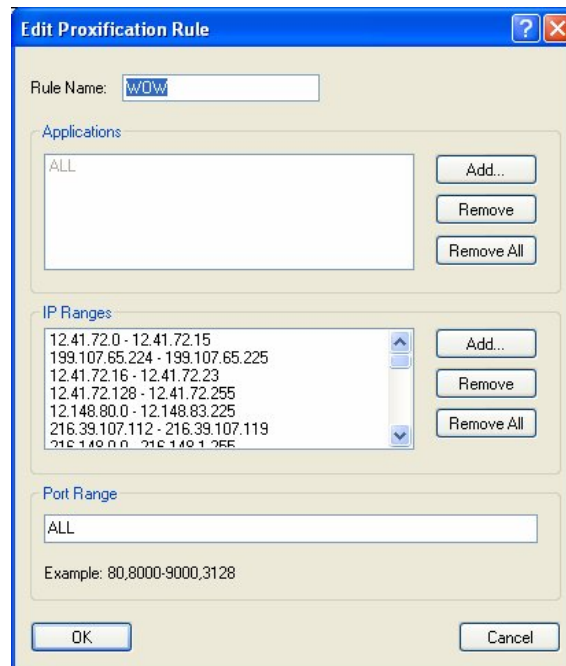
Press “OK” and then “OK” again to bring you back to the main program screen.

Now that you have setup the program to use HTTP-Tunnel, select "File" then "Load Settings". Now browse to the "blizzard.prx" file and select and OPEN it. This file can be found in the ORIGINAL ZIP FILE!

Next, click "Proxification rules"



Now when this screen opens up, simply select the "WOW" application line and select the "EDIT" button:

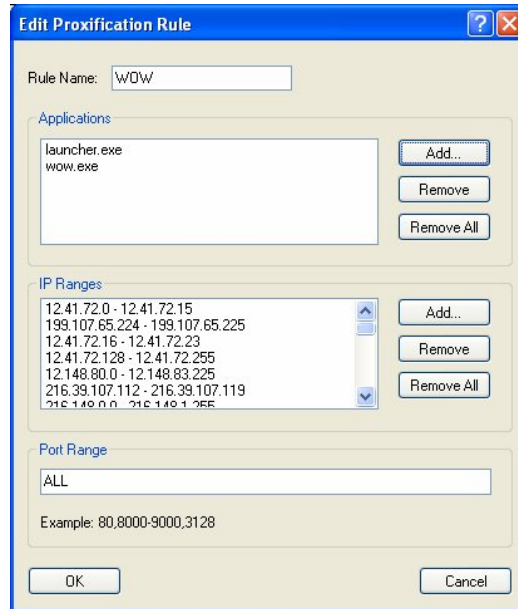


******* YOUR WINDOW SHOULD LOOK EXACTLY AS THE ONE ABOVE OR YOU DID NOT LOAD THE BLIZZARD.PRX FILE CORRECTLY IF IT DOES NOT LOOK LIKE THE ABOVE SCREENSHOT, DO NOT CONTINUE AS WoW WILL NOT WORK! *******

Next under "Applications" select the "ADD" Button and navigate to your World of Warcraft folder, and select "Launcher.exe" and select "Open".

Next repeat the above process and select "WoW.exe"

Your screen should now look **EXACTLY** like this:



If it does select "OK" if it does not, re-read this entire document because you skipped something.

Now open World of Warcraft and login, you should be working correctly there are quite a few factors that can adversely affect your ping rate. However here in the USA I am able to maintain a constant ping rate of 450ms or lower in the game, including in high traffic areas such as Ironforge.



Your proxifier and http-tunnel client should look like this:

