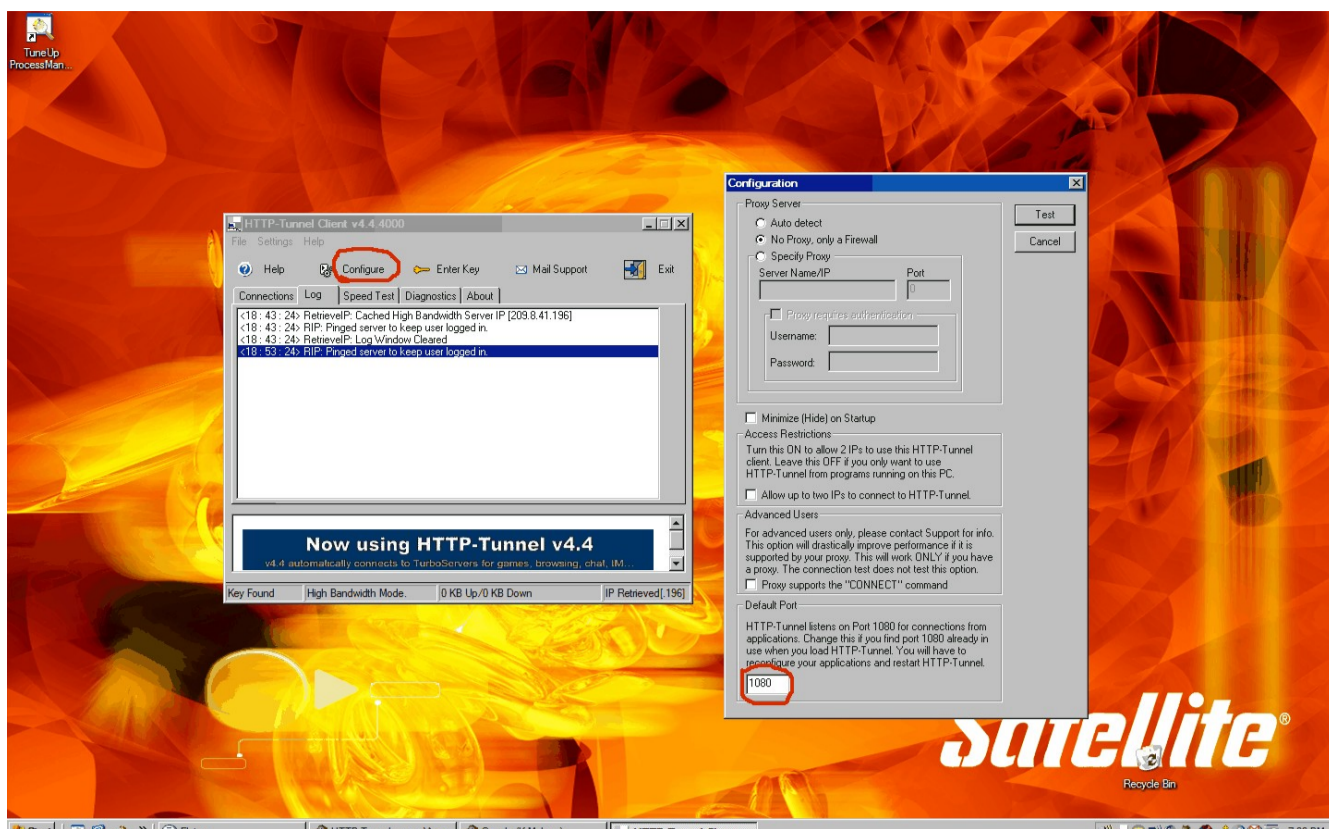


This guide will show you how to configure Winamp and to use Http-Tunnel.

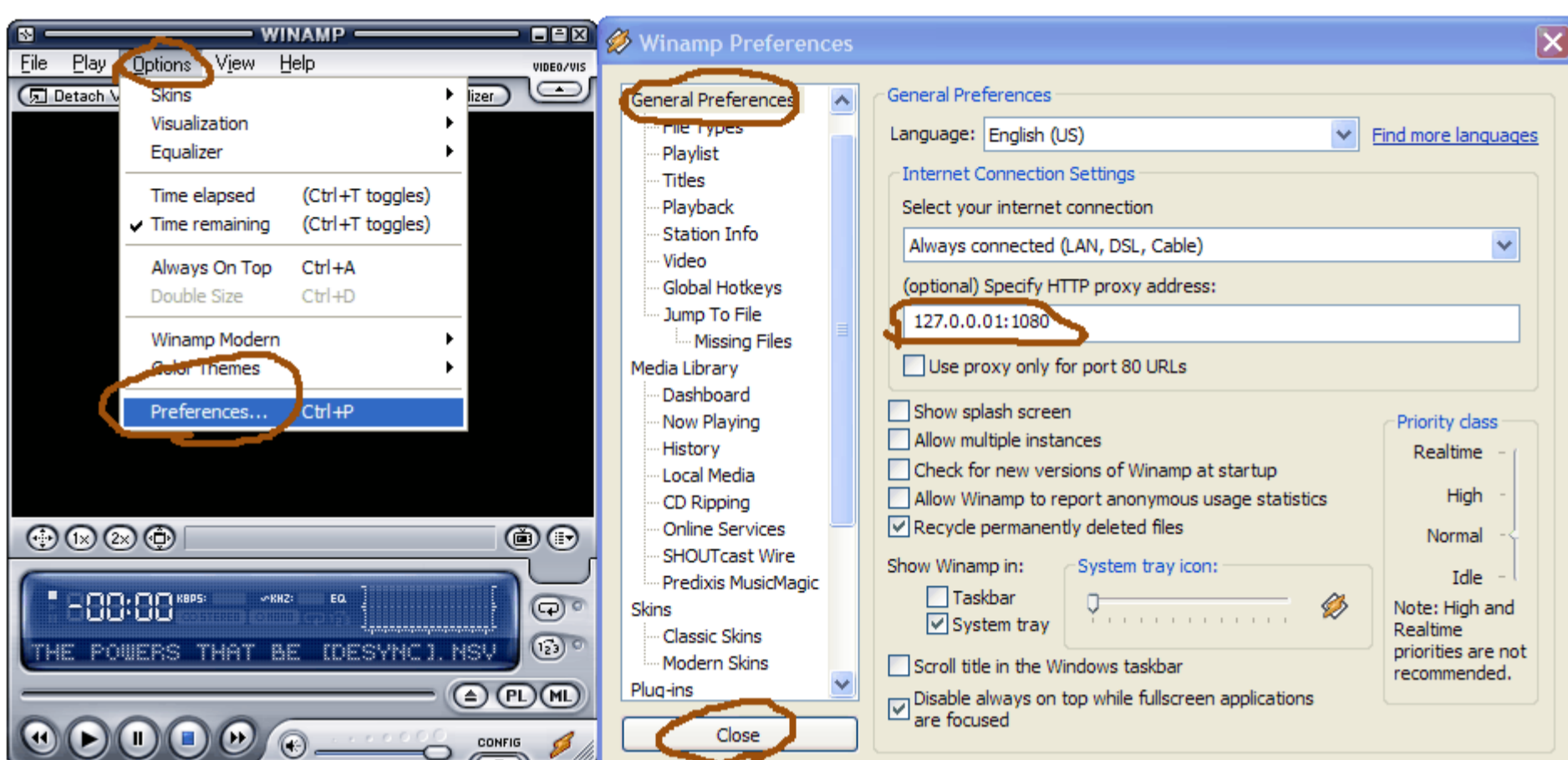
Once you have Http-Tunnel installed, run the application, The main window will appear, choose the configure option. There you will be presented with three (3) options.

1. You can Select Auto detect if you want Http-Tunnel to detect your settings.
2. No Proxy, only a firewall if this is appropriate.
3. Specify Proxy, Here you will enter the IP address and Port number of the proxy that you use.

Complete 1 of the 3 options, then click test, the client will bind to port 1080 and localhost by default and connect to the tunnel servers if your settings are correct.



Open Winamp. On the Tool Bar ' Click ' Options, a pull down menu appears, Scroll down to ' Preferences and ' Click ' it. Another window will appear. ' Click ' on the General Preferences option. In the field below (optional) Specify HTTP proxy address: Enter: 127.0.0.1:1080 then ' Click ' Close. Exit and restart Winamp.



I have been able to view ShoutCast videos using this configuration.