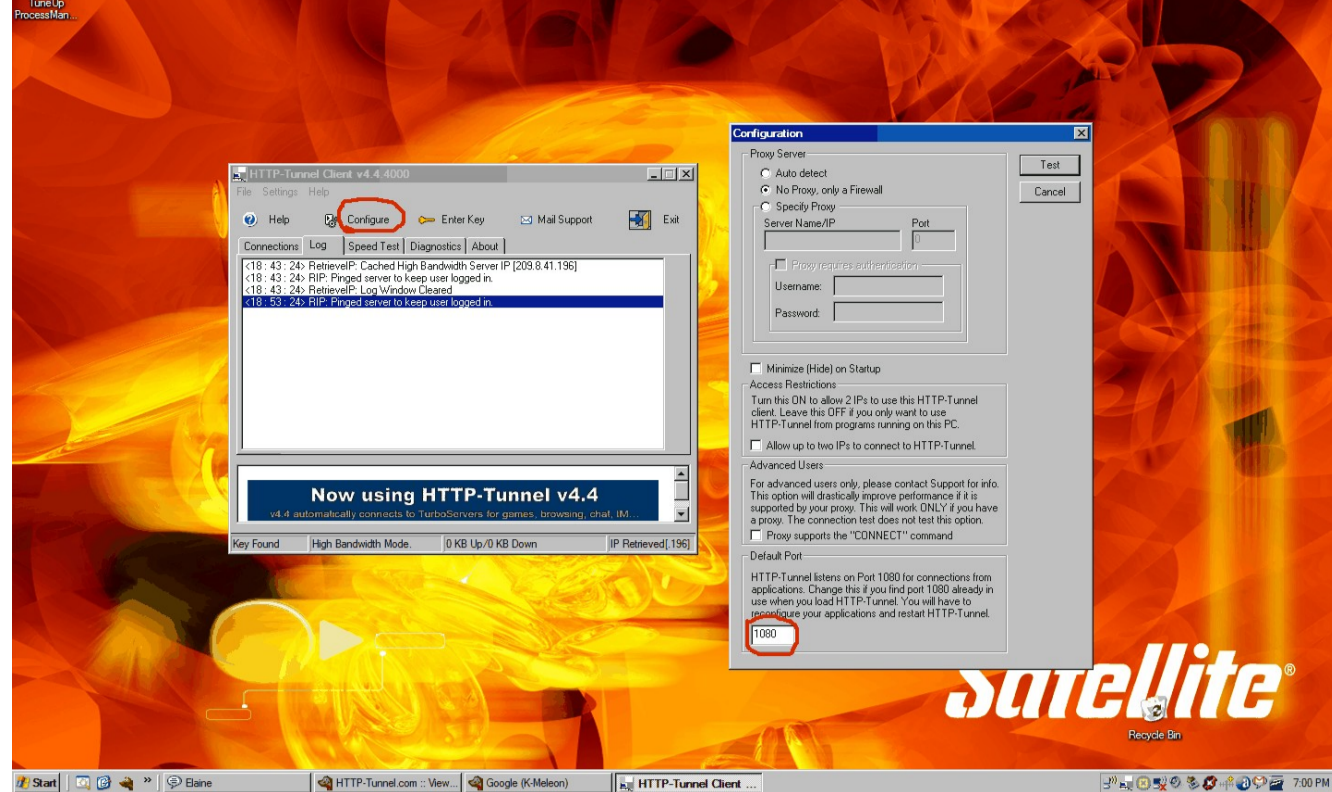


This guide will show you how to configure Windows Live Messenger (here after referred to as:WLM) to work with Http-Tunnel.

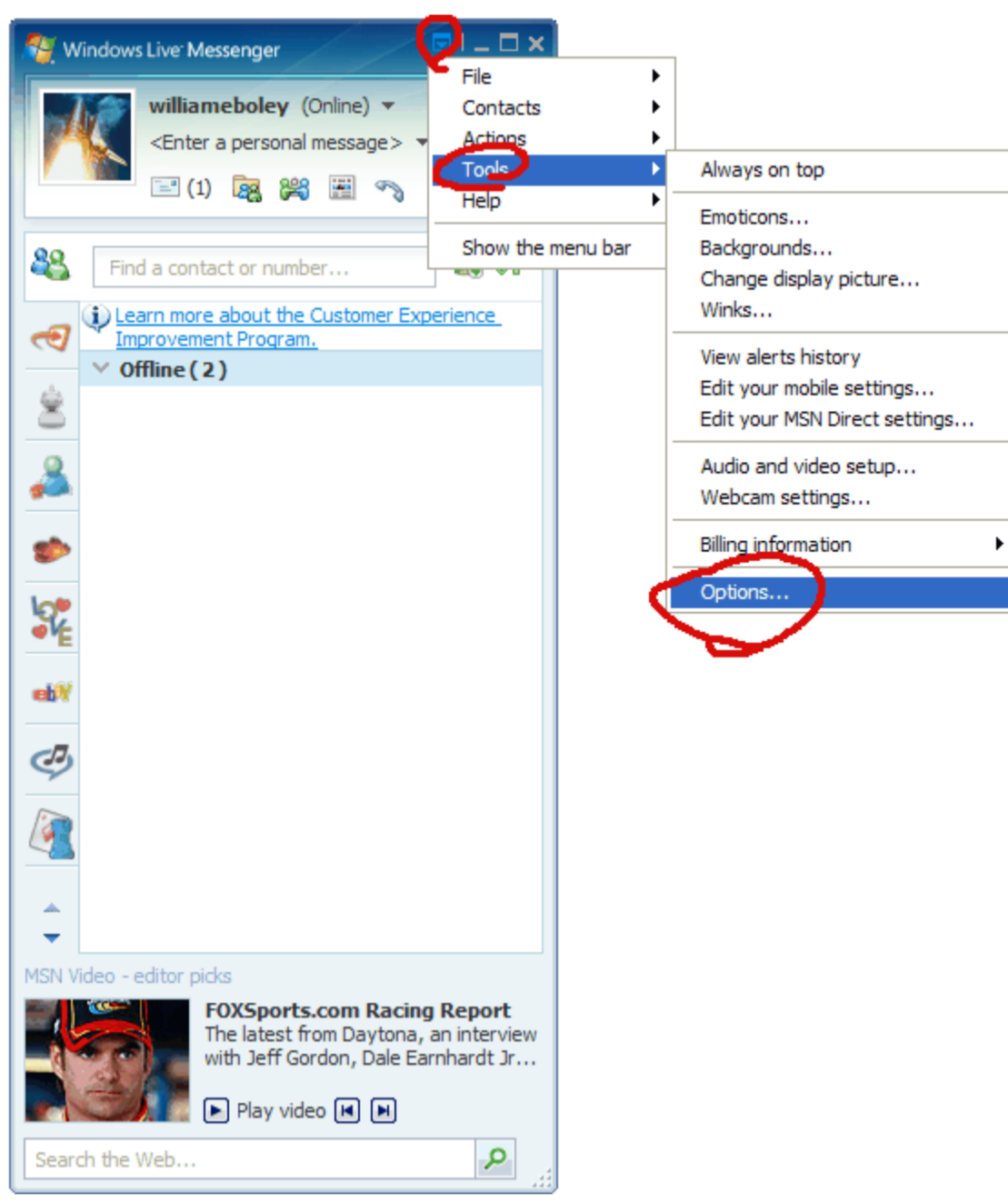
Once you have Http-Tunnel installed, run the application, The main window will appear, choose the configure option. There you will be presented with three (3) options.

1. You can Select Auto detect if you want Http-Tunnel to detect your settings.
2. No Proxy only a firewall if this is appropriate.
3. Specify Proxy, Here you will enter the IP address and Port number of the proxy that you use.

Complete 1 of the 3 options, then click test, the client will bind to port 1080 and localhost by default and connect to the tunnel servers if your settings are correct.



Many applications detect Internet Explorer settings. WLM is no exception. Careful reading and comprehension of these instructions will enable you to use WLM with HTTP Tunnel using Internet Explorer settings or running WLM independent of Internet Explorer. If you have Internet Explorer configured to use either the HTTP or SOCKS settings WLM will detect those settings and will import those settings automatically and you need do nothing. If you want/need to leave Internet Explorer in the 'Automatically Detect Settings' you have one optional setting available for WLM. You can configure WLM to use SOCKS. To do this you must have Internet Explorer in the Automatically Detect Settings. Locate the pull down arrow at the top of WLM and 'Click' it a pull down menu should appear. Scroll down to Tools another pull down list appears. Scroll down to Options and 'Click' it.



The Options window should appear. Navigate down until you find the Connection option and 'Click' it. Locate the 'Advanced Settings' radio button and 'Click' it. The Settings window should appear. In the Settings window fill in the appropriate fields. 127.0.0.1 for SOCKS and 1080 in the Port area. 'Click' on the Test radio button to confirm that your settings will connect to the servers. The Connection Tester window should appear, it can verify your settings and if WLM can make connection. 'Click the OK's and Apply as you exit. (Note: If your network requires you to login be sure to fill in the Username and Password fields.) You can now use WLM just sign in as you normally do.

