



Yahoo Instant Messenger (via SocksCap)



[HTTP-Tunnel.com Forum Index -> Documentation](#)

[View previous topic](#) :: [View next topic](#)

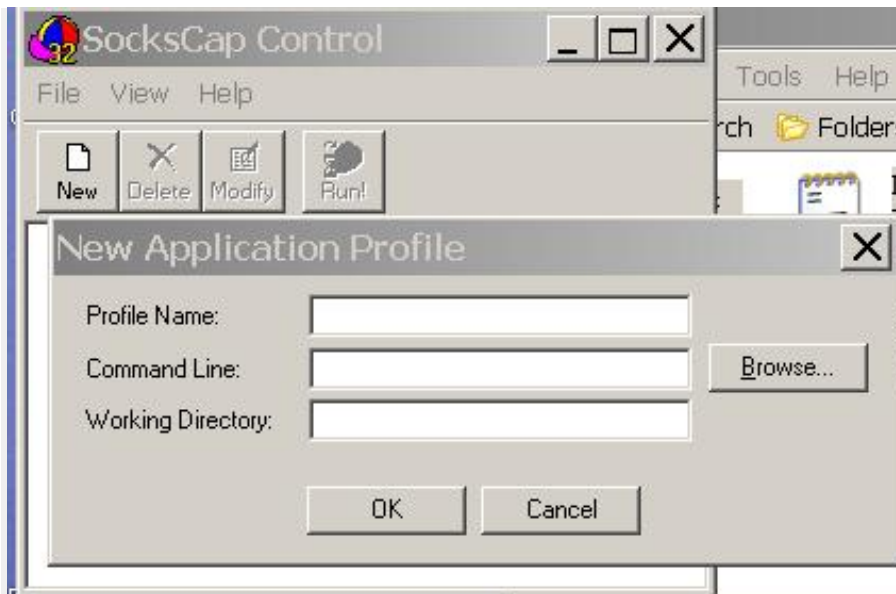
Author	Message
<p>bluethought Site Admin</p> <p>Joined: 25 Jun 2005 Posts: 2113</p>	<p> <input type="checkbox"/> Posted: Thu Jul 28, 2005 6:58 am Post subject: Yahoo Instant Messenger (via SocksCap) <input type="button" value="quote"/> </p> <hr/> <p>Video</p> <p>http://www.http-tunnel.com/bt/Videos/Yahoo%20via%20SocksCap.avi</p> <p>If the video doesn't play, visit the "Readme first" post in this forum.</p> <p>Guide</p> <ol style="list-style-type: none"> 1. Download and install SocksCap from http://www.socks.permeo.com/ 2. Run SocksCap, and configure it as described below. 3. Open File Menu, and click on Settings



4. Enter SOCKS server localhost
Port 1080
Protocol: SOCKS Version 5
Name Resolution: Attempt local then remote



5. Click OK
6. Click the New button on SocksCap Control
7. Click on Browse



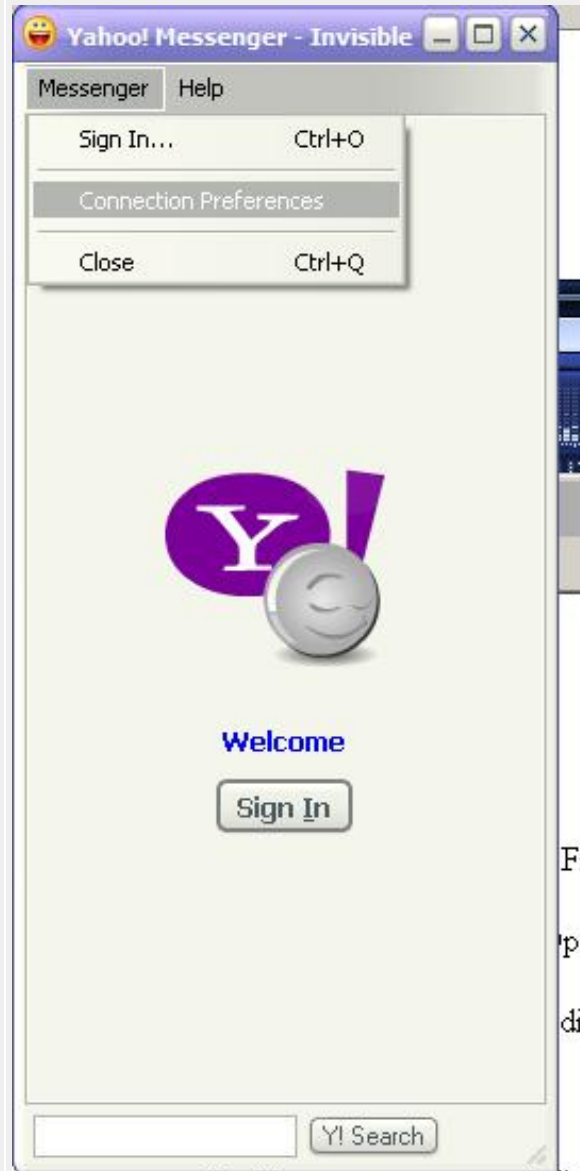
8. Browse to your Yahoo Messenger folder in the Program Files folder of your drive which has your Windows installation, select the Yahoo Messenger executable (YPager.exe), and click on Open.



9. Click on the OK button in the "New Application Profile" dialog box to close it.

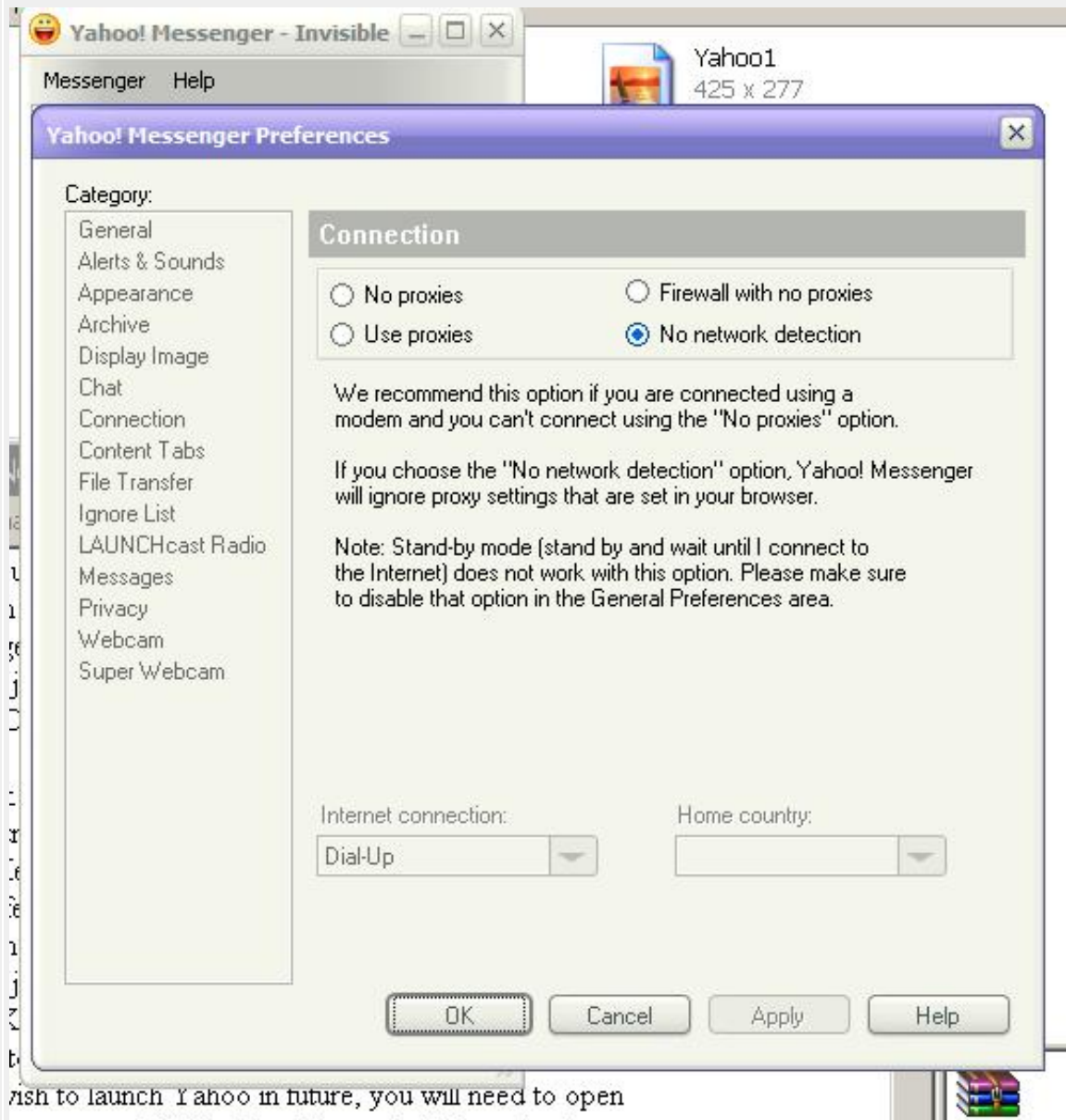
10. Double click on the YPager icon that appears in the SocksCap Control window, to launch it using SocksCap.

11. In Yahoo Messenger, open the Messenger menu, and click on Connection Preferences



essenger, open the Messenger menu, and click
ferences [pic5 - Yahoo3.jpg]
ish to launch Yahoo in future, you will need to

12. Select "No network detection" in the screen that appears



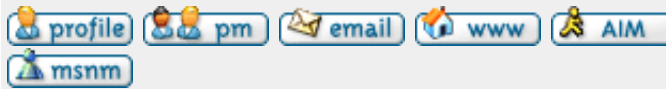
wish to launch Yahoo in future, you will need to open

13. Click on OK to close the Yahoo Messenger Preferences dialog box.

14. Now sign into Yahoo as usual.

15. When you wish to launch Yahoo in future, you will need to open SocksCap and repeat step 10 (double click on the YPager icon).

[Back to top](#)



Display posts from previous:



[HTTP-Tunnel.com Forum Index](#) -> [Documentation](#)

All times are GMT

Page 1 of 1

Jump to:

- You **can** post new topics in this forum
- You **can** reply to topics in this forum
- You **cannot** edit your posts in this forum
- You **cannot** delete your posts in this forum
- You **cannot** vote in polls in this forum

Powered by [phpBB](#) © 2001, 2005 phpBB Group