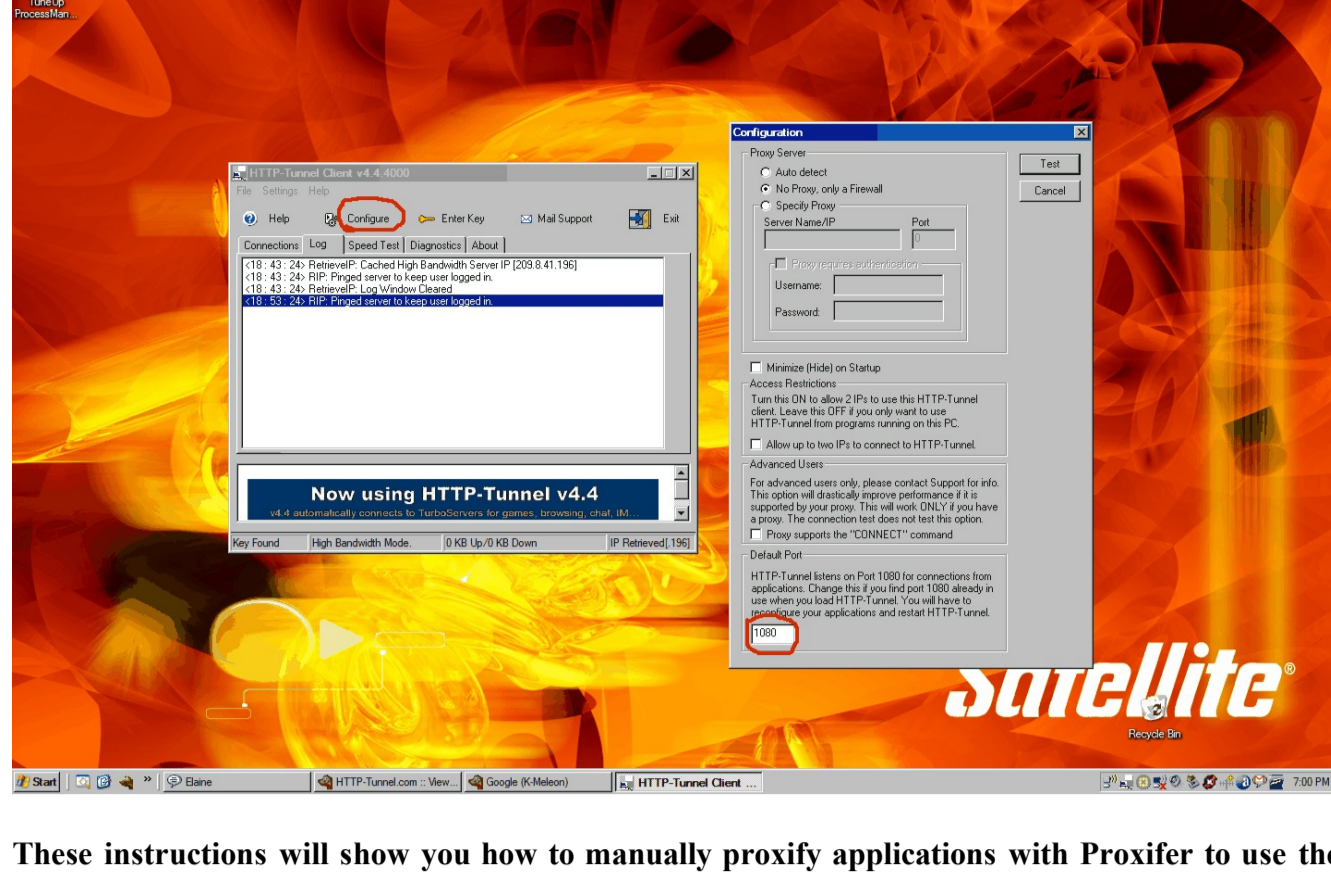


This guide will show you how to configure Proxifier to work with Http-Tunnel and to configure other applications using Proxifier to 'tunnel' through the client.

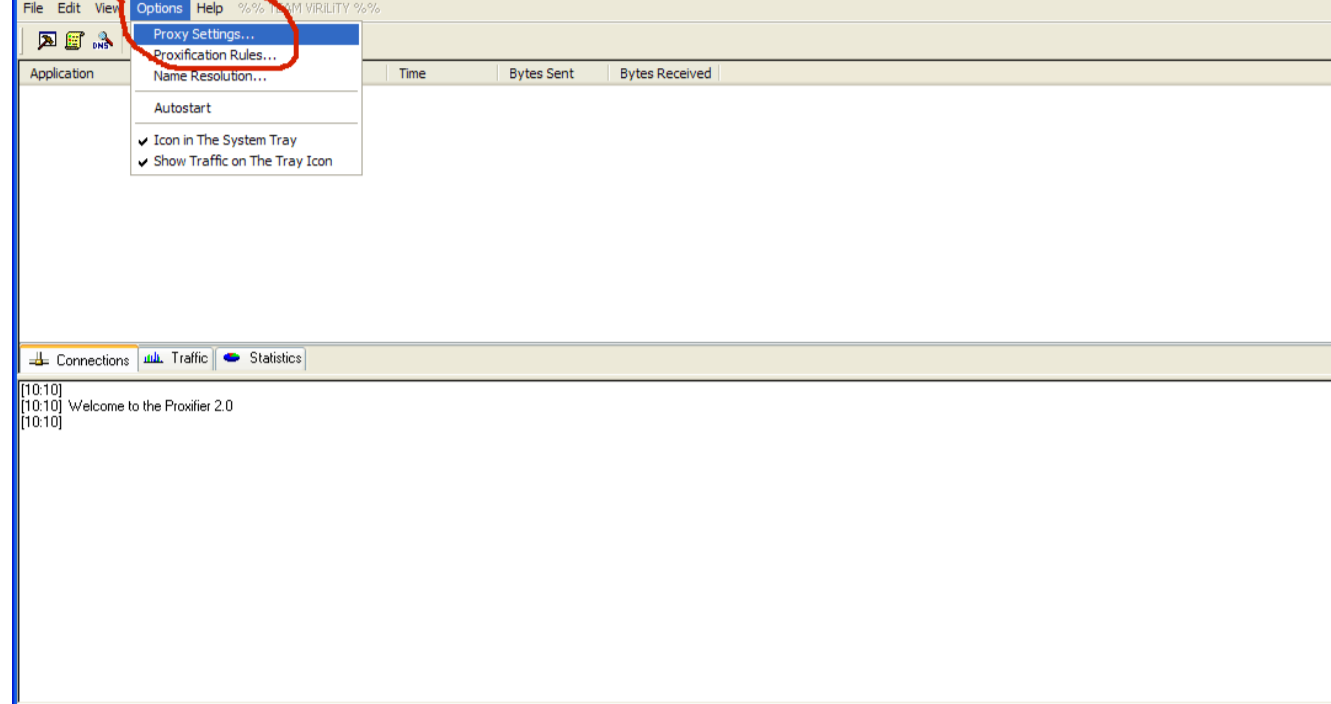
Once you have Http-Tunnel installed, run the application, The main window will appear, choose the configure option. There you will be presented with three ( 3 ) options.

1. You can Select Auto detect if you want Http-Tunnel to detect your settings.
2. No Proxy only a firewall if this is appropriate.
3. Specify Proxy, Here you will enter the IP address and Port number of the proxy that you use.

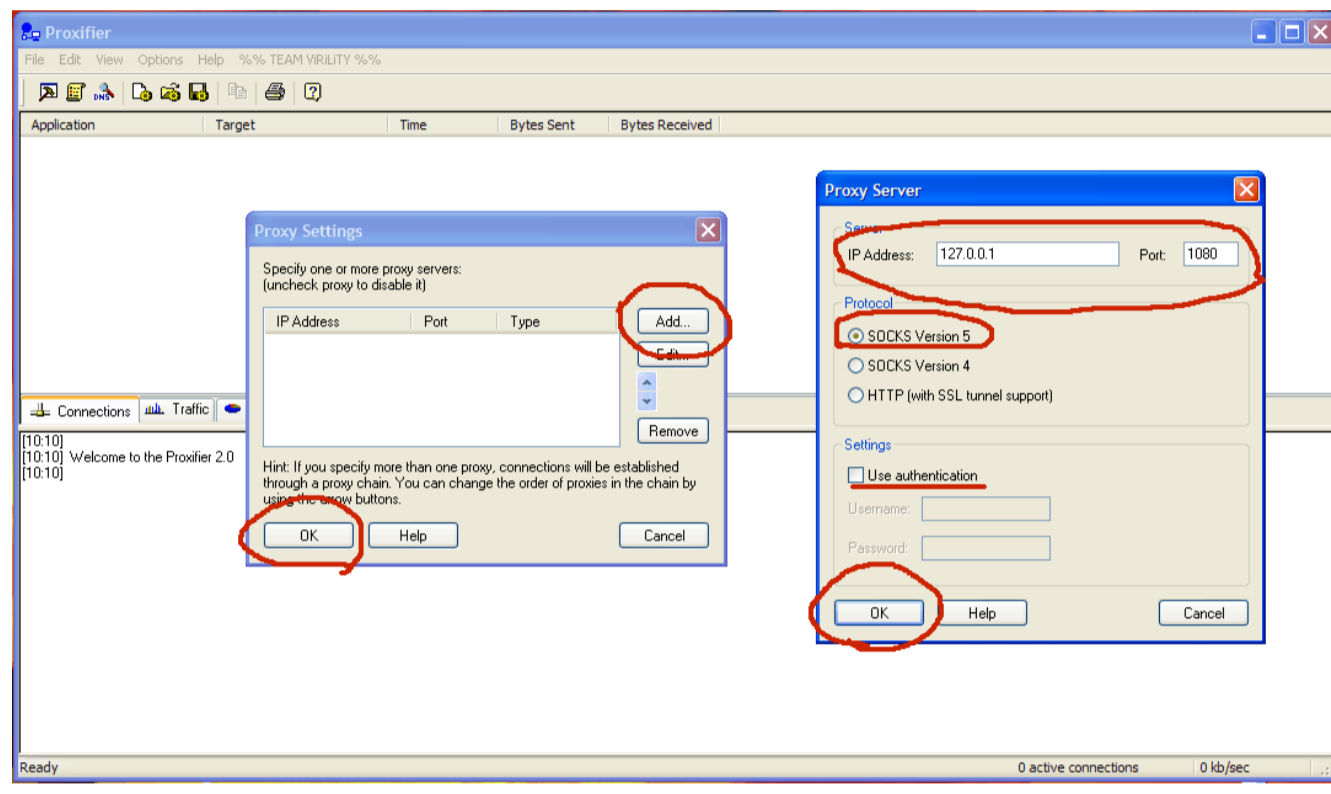
Complete 1 of the 3 options, then click test, the client will bind to port 1080 and localhost by default and connect to the tunnel servers if your settings are correct.



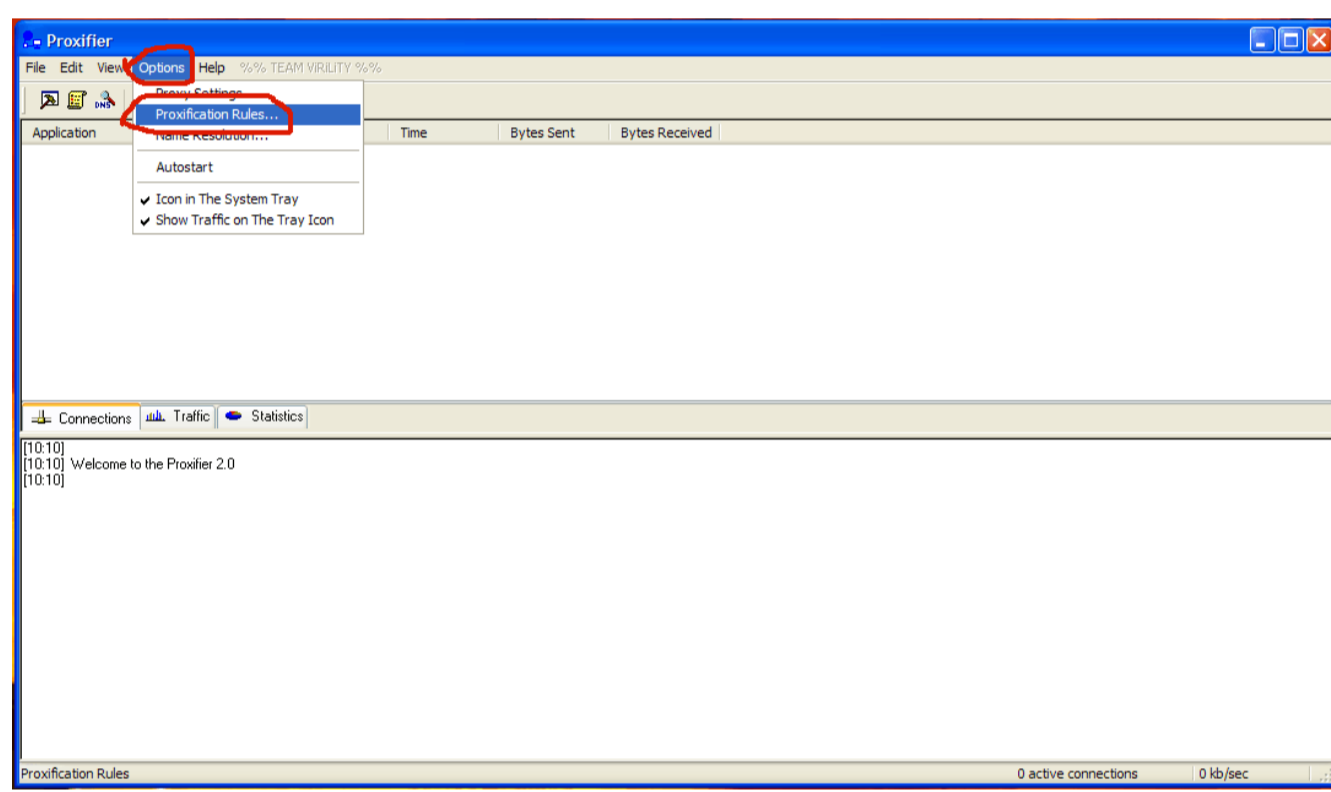
These instructions will show you how to manually proxyify applications with Proxifier to use the Tunnel Client. Run Proxifier. On the Menu bar choose Options, a pull down list should appear, select 'Proxy Settings'. The Proxy Settings window should appear.



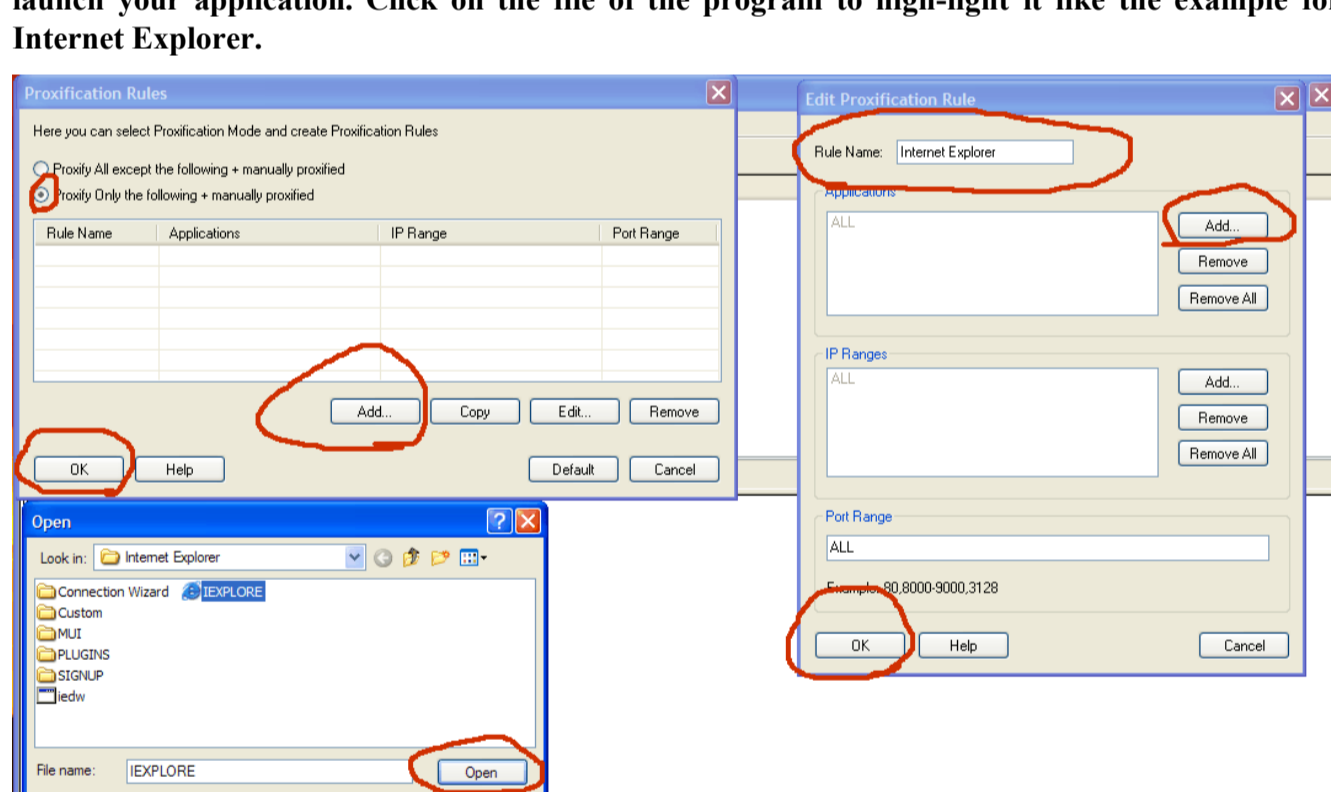
On the Proxy Settings window 'Click' the Add button, The Proxy Server window should appear. In the IP field type in 127.0.0.1 or (localhost) 127.0.0.1 works best in most cases. Then enter 1080 in the Port field. Select 1 of the 3 protocols to use, either SOCKS 4/5 or HTTP. Experimenting with these setting may determine which works best for you. If you are using a Proxy and it requires authentication be sure to fill in the proper fields. After you have completed entering in the appropriate values 'Click' the OK's as you exit.



Next: On the Proxifier menu bar 'Click' Options. A pull down list should appear. Select: Proxification Rules and 'Click' on it.



The 'Proxification Rules' window should appear. Put a 'dot' in 'Proxy Only the following + manually proxified'. Next 'Click' on the Add button the 'Edit Proxification Rule' window should appear. In 'Rule Name' field give a name to your rule. Here I am naming Internet Explorer as you can see. Then 'Click' the Add button in the 'Edit Proxification Rule' window. A window titled 'Open' should appear. This allows you to browse your computer for files. Use the window to browse for the .exe file of the application you want to proxyify or whatever file it is you use to launch your application. Click on the file of the program to high-light it like the example for Internet Explorer.



Then 'Click' Open on the window titled 'Open'. You will then see the file has now been loaded into the 'Edit Proxification Rule' window. 'Click' OK on the 'Edit Proxification Rule' window. Then 'Click' OK on the 'Proxification Rules' window. You have now completed the manual proxification of an application's file. You may want to shut down all applications including the tunnel client. Then restart the client and then Proxifier. Most of the times it will not matter. Proxifier is able to accommodate just about any start up sequence.